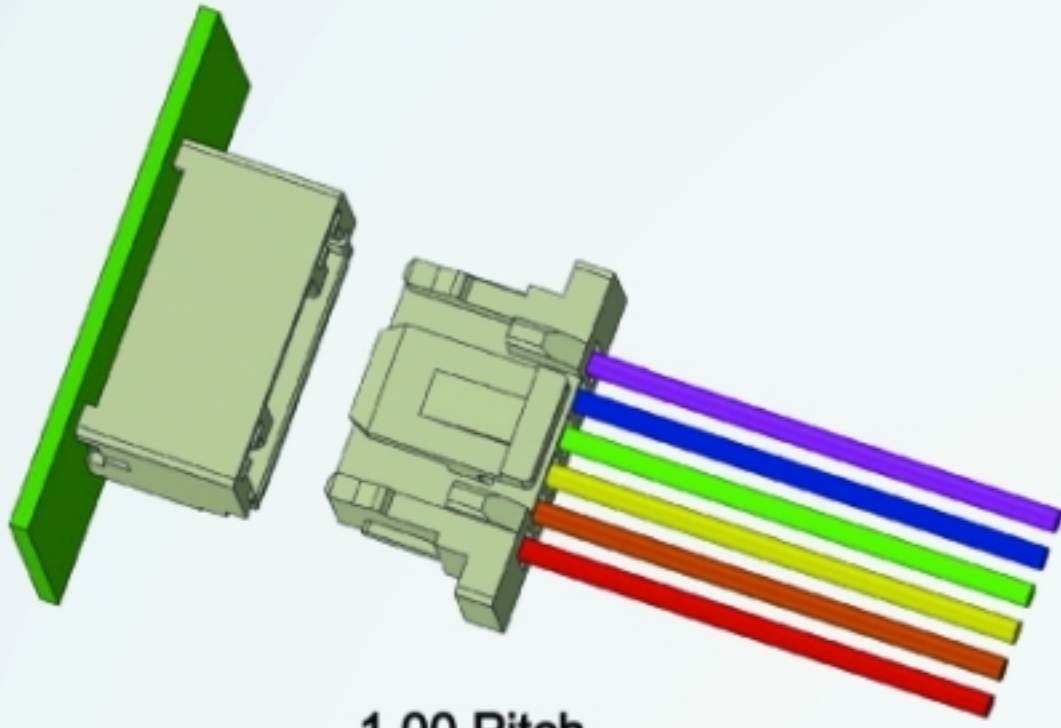
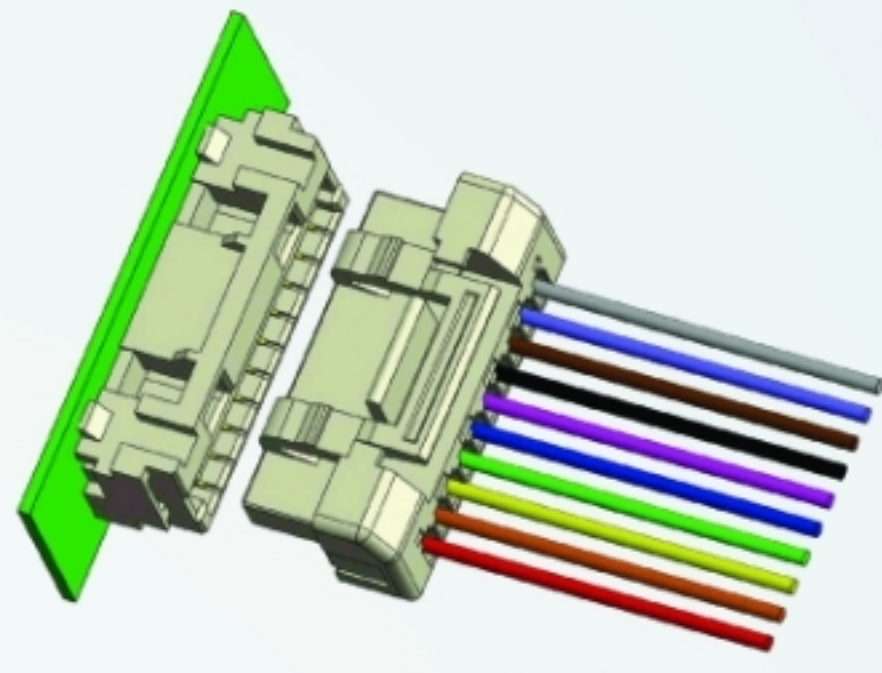


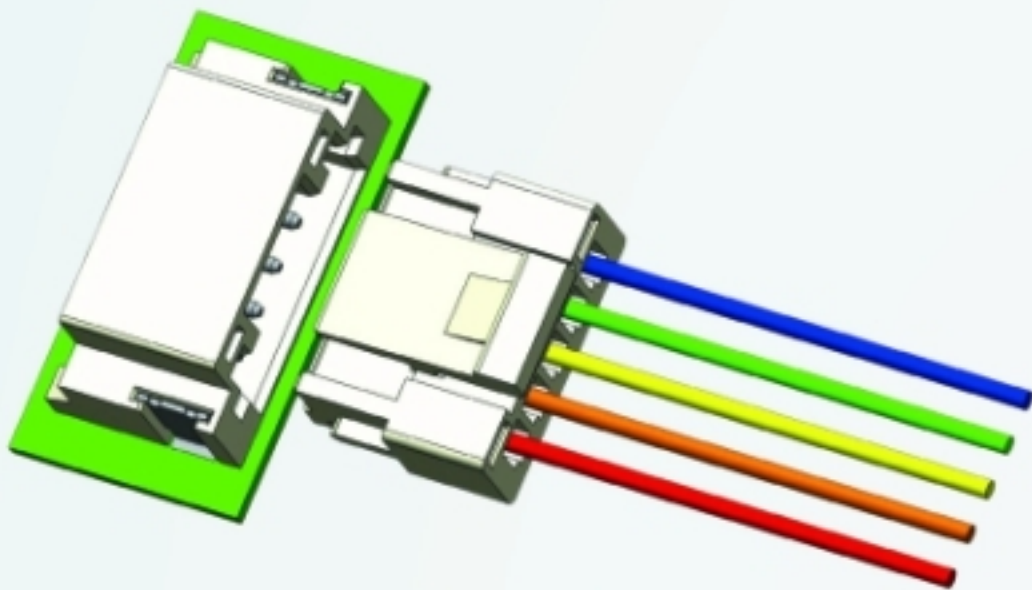
Wire to Board Lock System



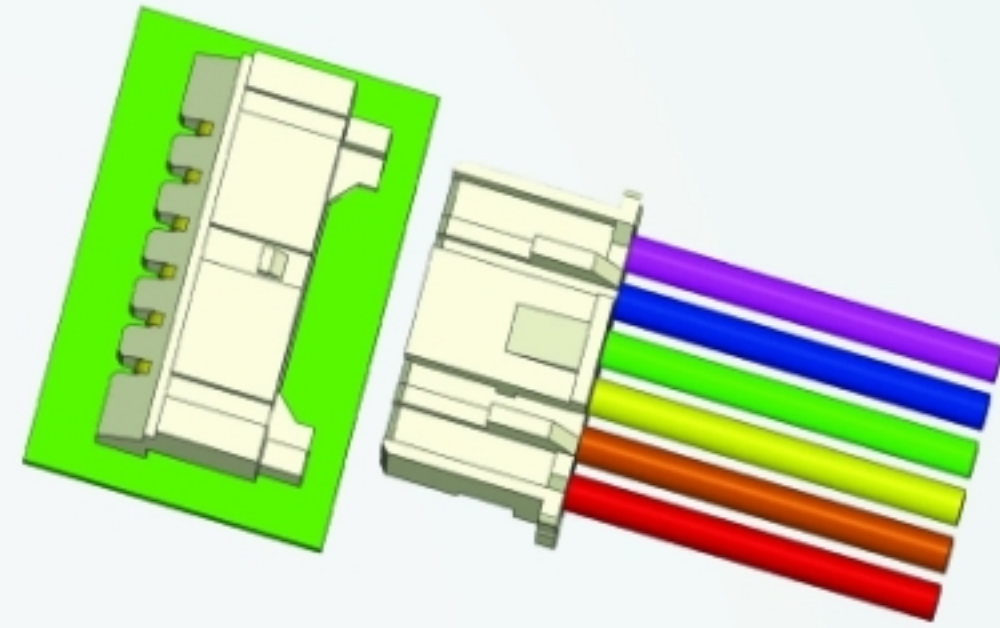
1.00 Pitch



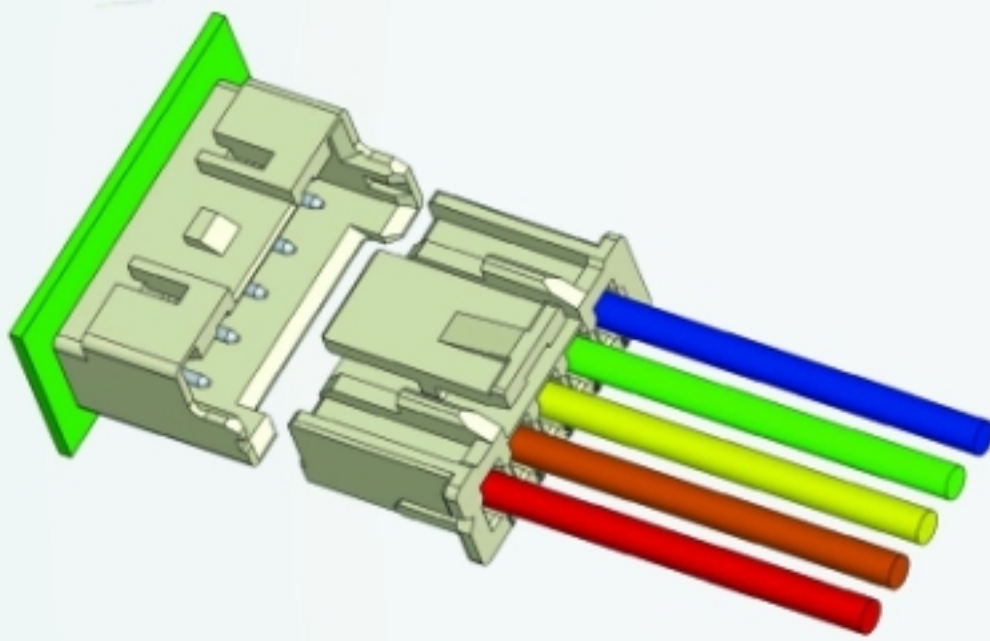
1.25 Pitch



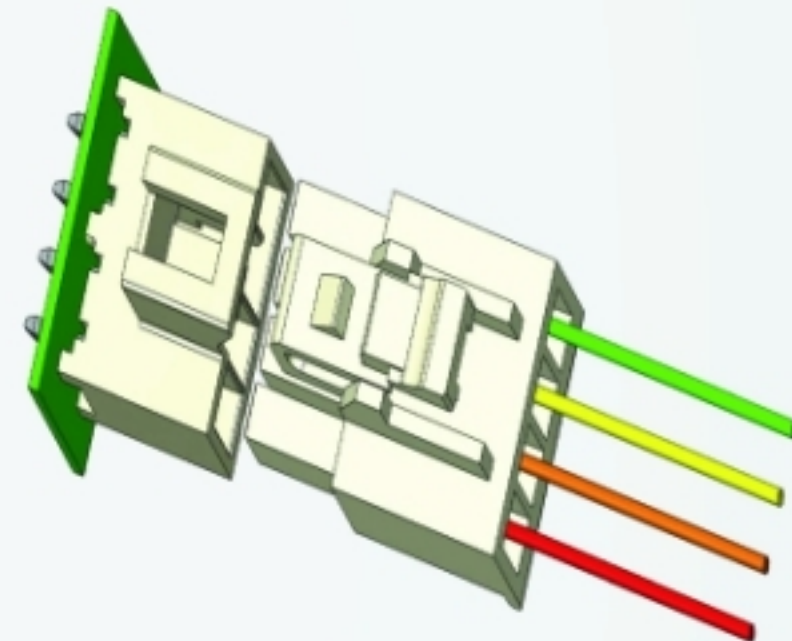
1.50 Pitch



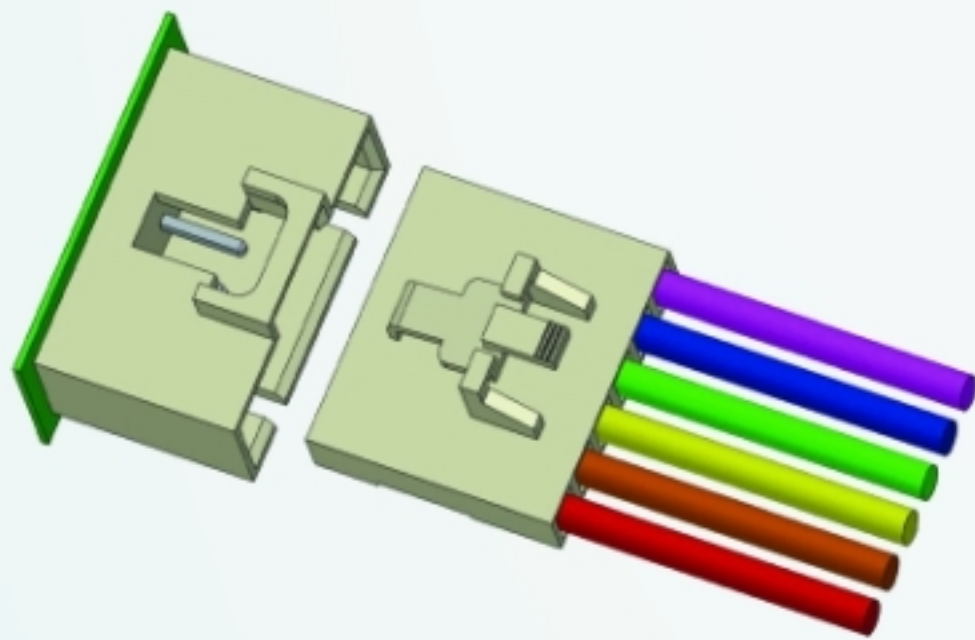
2.00 Pitch



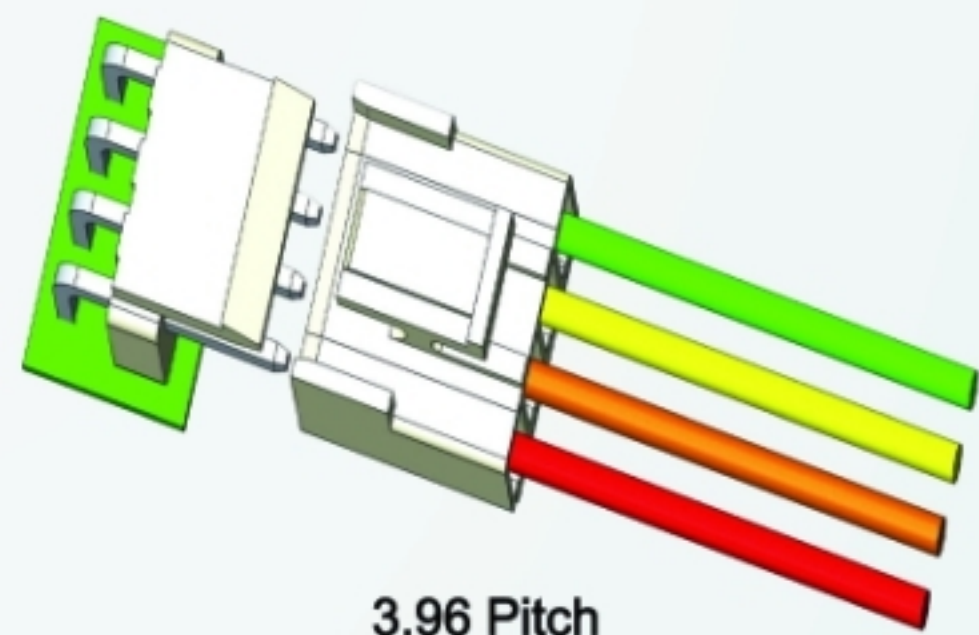
2.50 Pitch



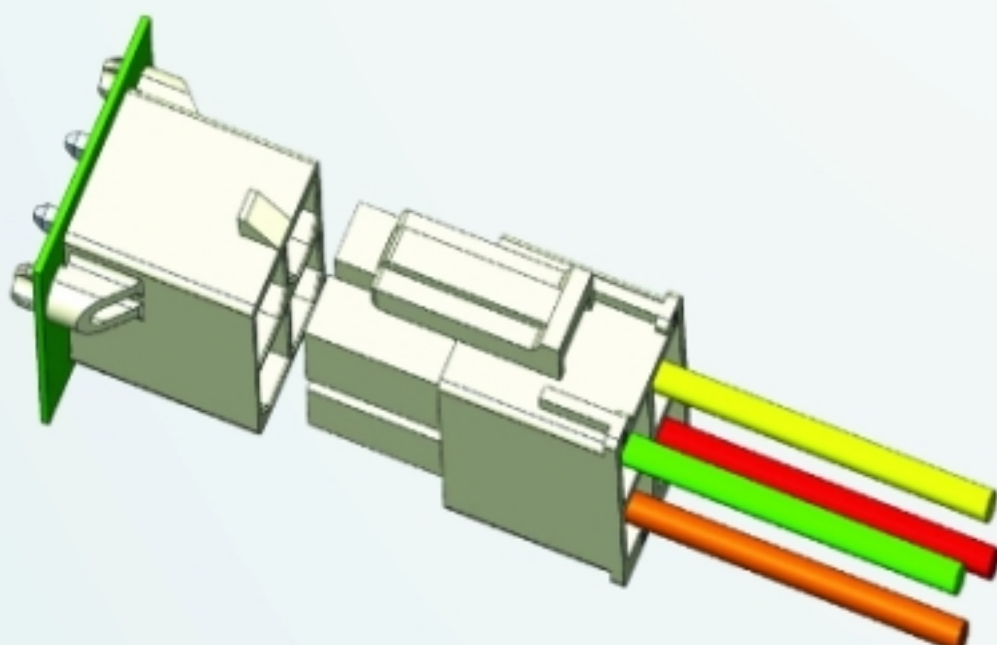
2.50 Pitch



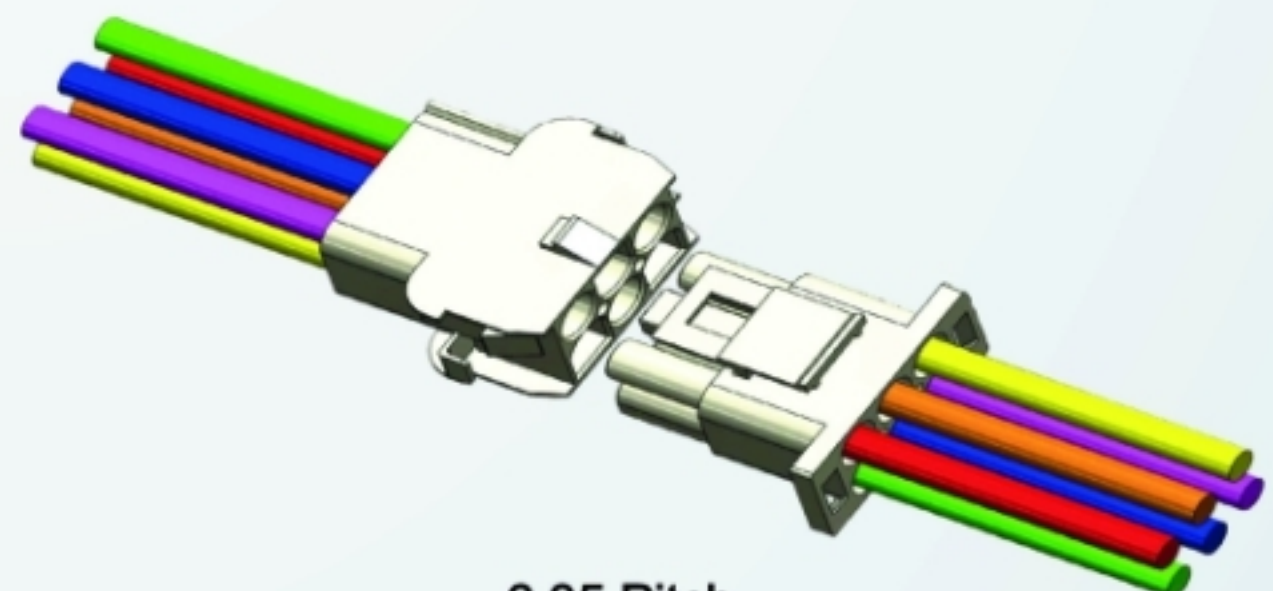
2.54 Pitch



3.96 Pitch

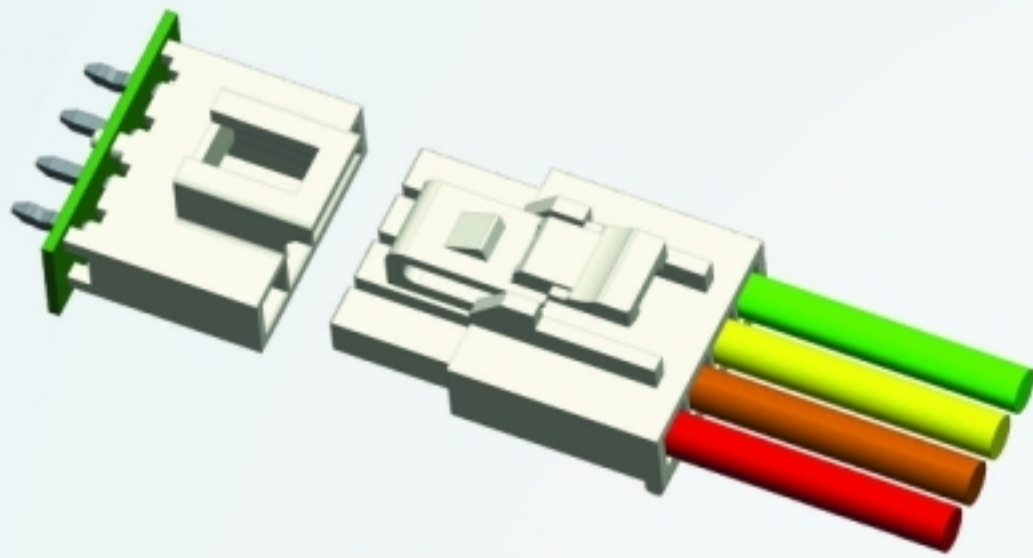


5.70 Pitch

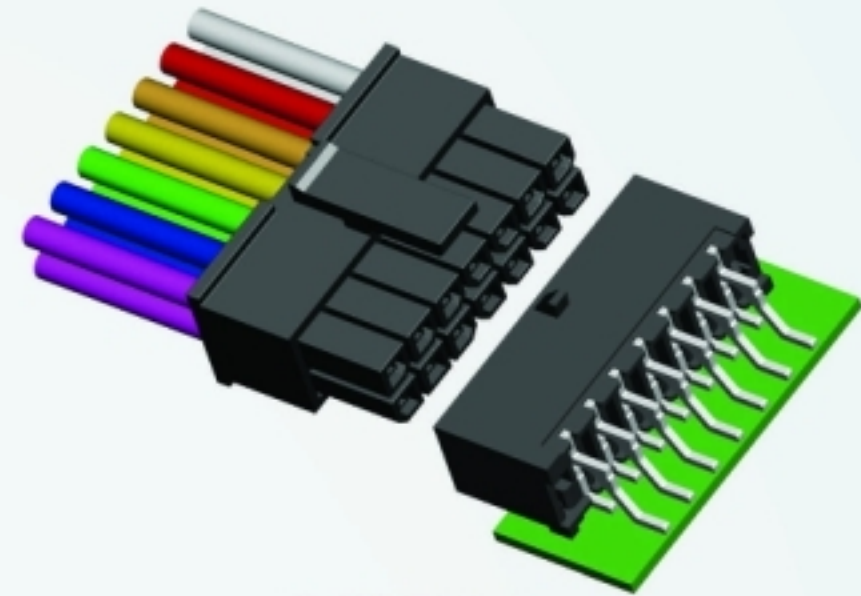


6.35 Pitch

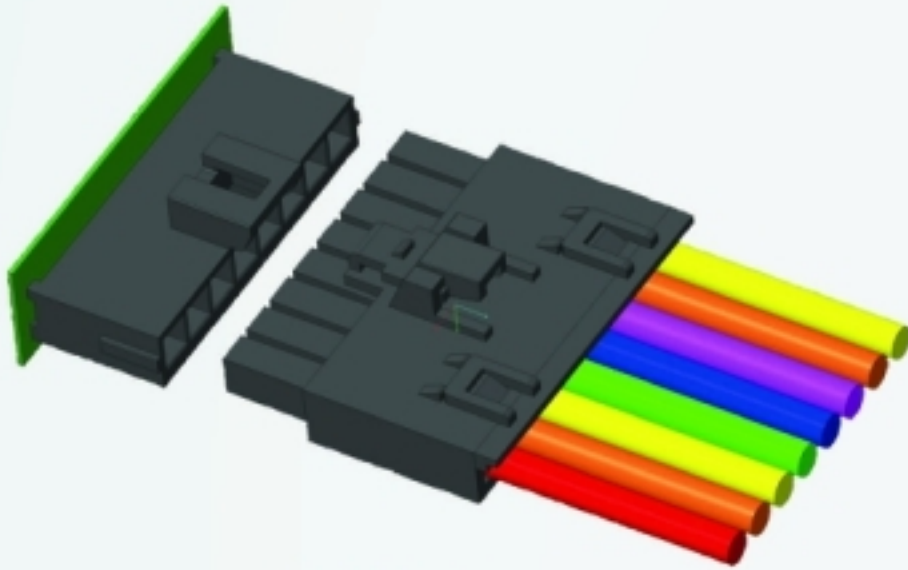
Wire to Board Lock System



2.50 Pitch



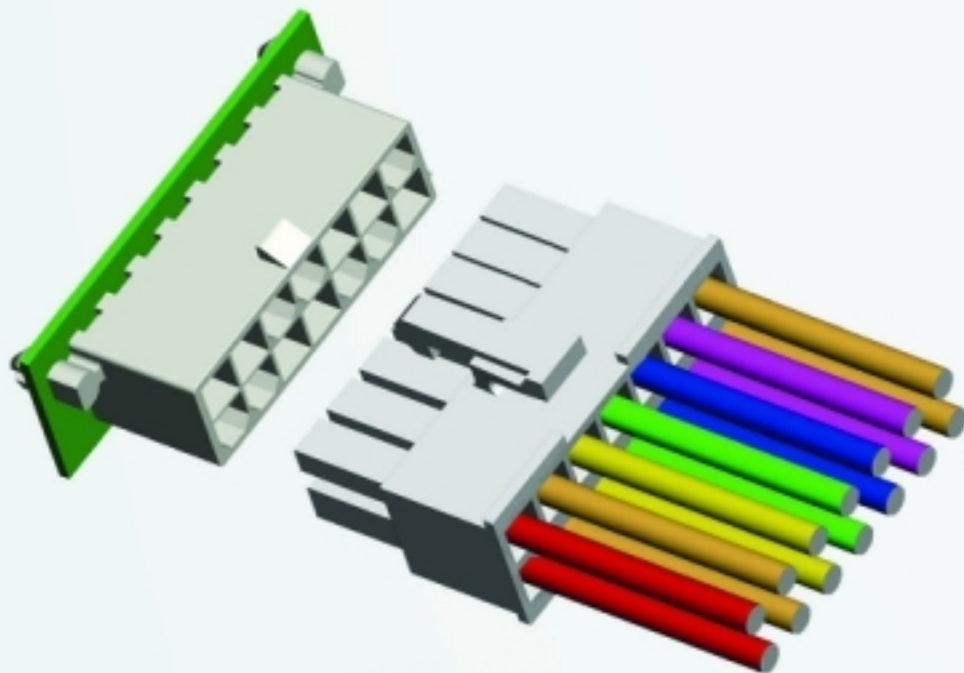
3.00 Pitch



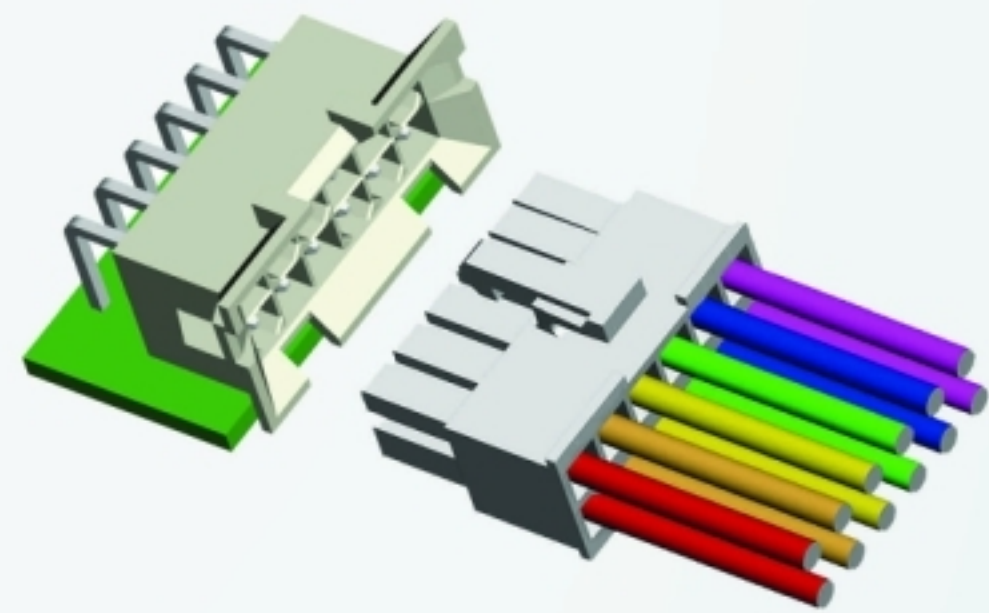
3.50 Pitch



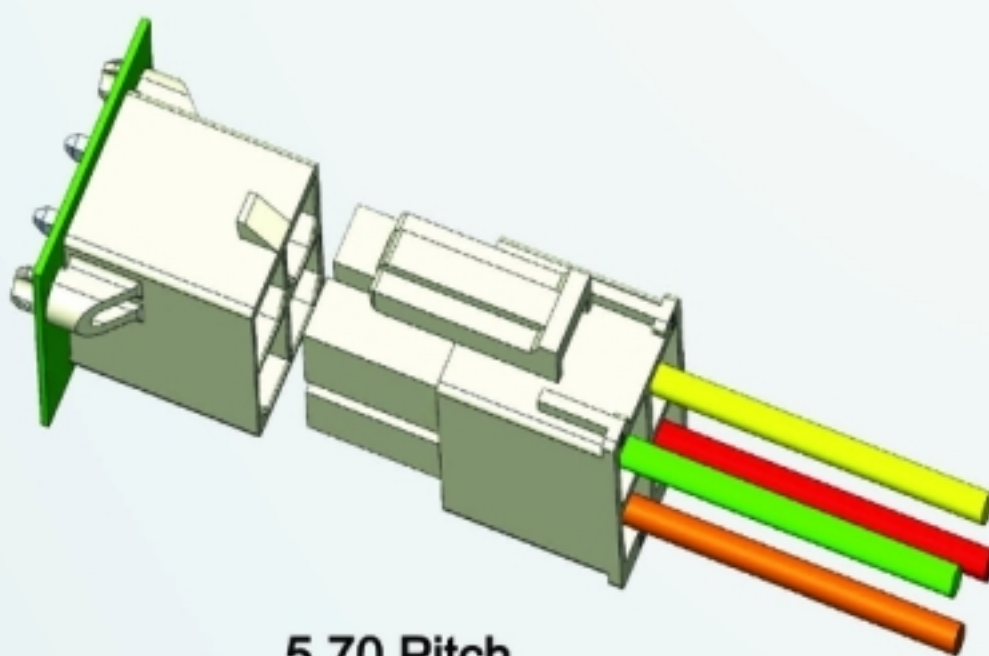
3.00 Pitch



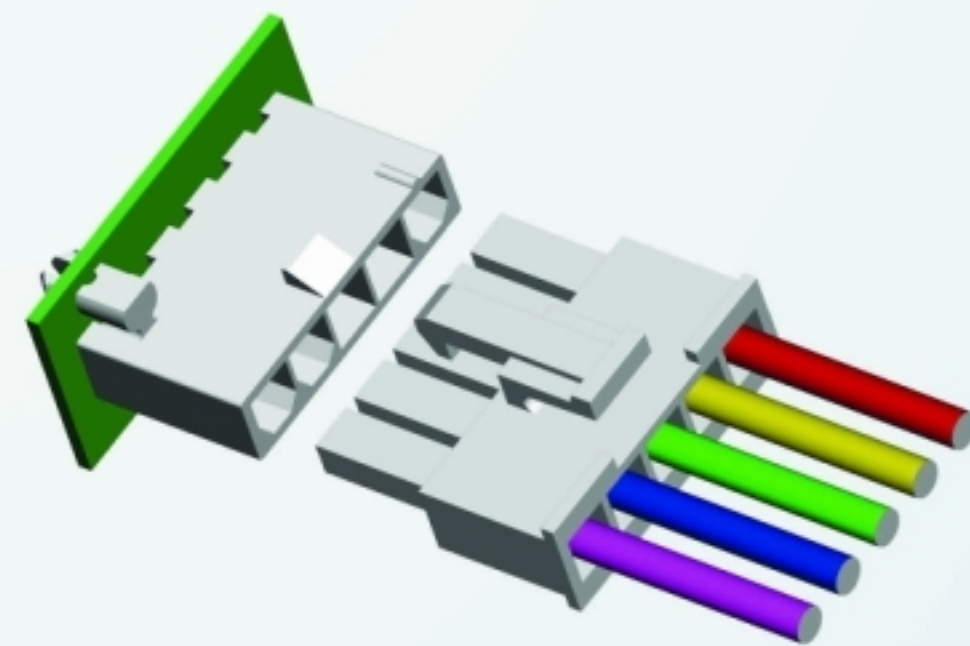
4.20 Pitch



4.20 Pitch



5.70 Pitch



4.20 Pitch

USB Type C Connector



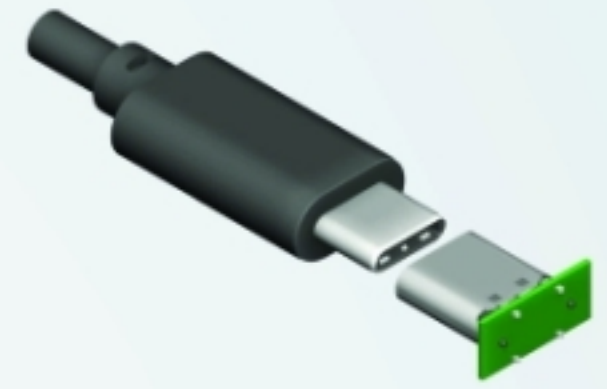
5077CS-24-SMC1-XX



Mating:USB C Type Plug Cable Series.



5077CS-24-SMC2-XX



Mating:USB C Type Plug Cable Series.



5077CR-16-SMC2-XX-TR



Mating:USB C Type Plug Cable Series.



5077CR-24-SMC4-XX-TR



Mating:USB C Type Plug Cable Series.

- | | |
|---|-------------------------------------|
| 1. Short Circuit Risk Avoidance | 3. Easy for EMI/IP67 Compliance |
| 2. Unrivaled Mechanical Robustness | 4. Guaranteed 10G/Elec. Performance |
| 5. Passed 30,000 Cycles Insertion / Extraction Test | |



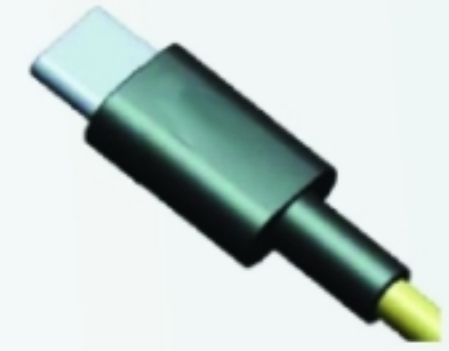
5077CR-24-SMC3-XX-TR



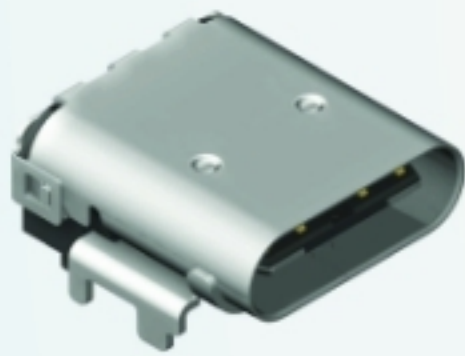
Mating:USB C Type Plug Cable Series.



5077CR-24-SME1-XX-TR



Mating:USB C Type Plug Cable Series.



5077CR-24-SMC5-XX-TR



Mating:USB C Type Plug Cable Series.



5077CR-24-SMC8-XX-TR



Mating:USB C Type Plug Cable Series.



5077CR-24-SMC7-XX-TR



Mating:USB C Type Plug Cable Series.



5077CR-24-SMC10-XX-TR



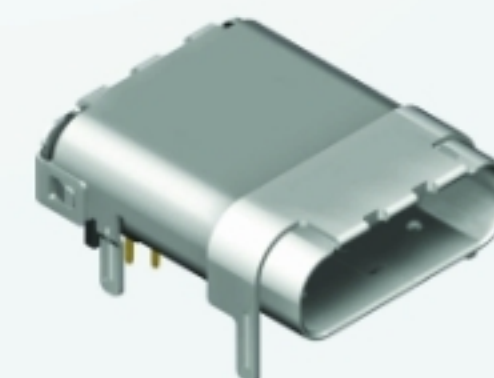
Mating:USB C Type Plug Cable Series.



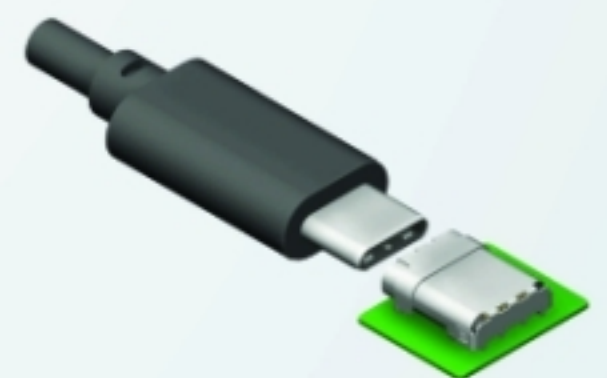
5077CR-24-SMC9-XX-TR



Mating:USB C Type Plug Cable Series.

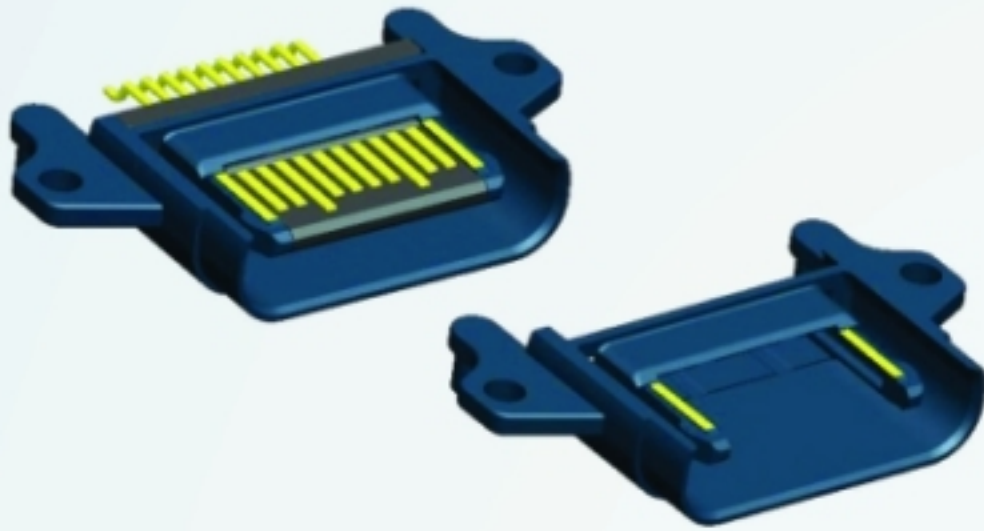


5077CR-24-SMC6-XX-TR



Mating:USB C Type Plug Cable Series.

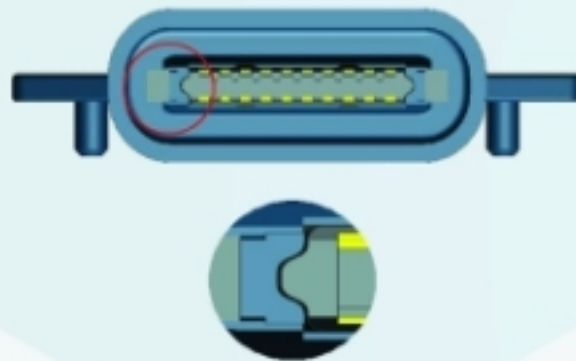
USB Type C Socket Connector



1. Short Circuit Risk Avoidance
2. Unrivaled Mechanical Robustness
3. Easy for EMI/IP67 Compliance
4. Guaranteed 10G/Elec. Performance
5. Modularized Smart Robotic Line
6. Speedy & Economical Customization

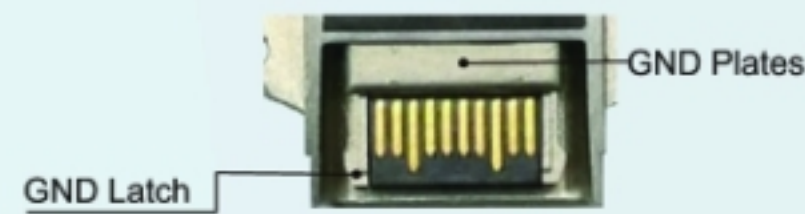
1

- Insert-mold solid terminal tongue
- The terminal tongue is well centered and held firmly by the All-In-One shell to prevent solder crack/short



2

- GND latch and GND plates are MIMed in All-In-One Sell, extremely strong structure
- The latch passed 30,000 plug/unplug test without deformation/wear-off.



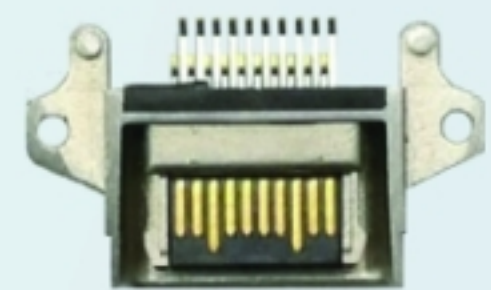
3

- All-In-One shell and terminal tongue can be easily assembled with simple sealing
- All-In-One sell, GND latch and Plates form perfect EMI shielding



4

- All-In-One shell and insert-mold terminal tongue are designed, built and assembled precisely and consistently well within spec.



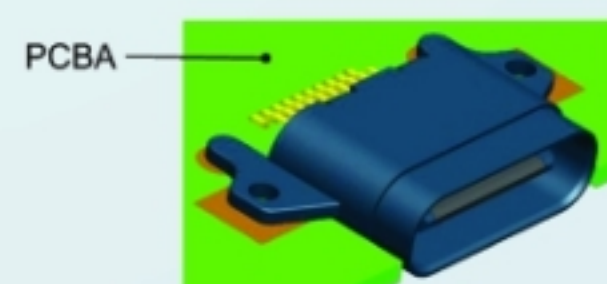
5

- Equipped with FANUC six axes robots
- Fully automated intelligent robotic line
- 100% inspection live data analysis
- Virtual Mfg, Traceability, No Strike, Mobility

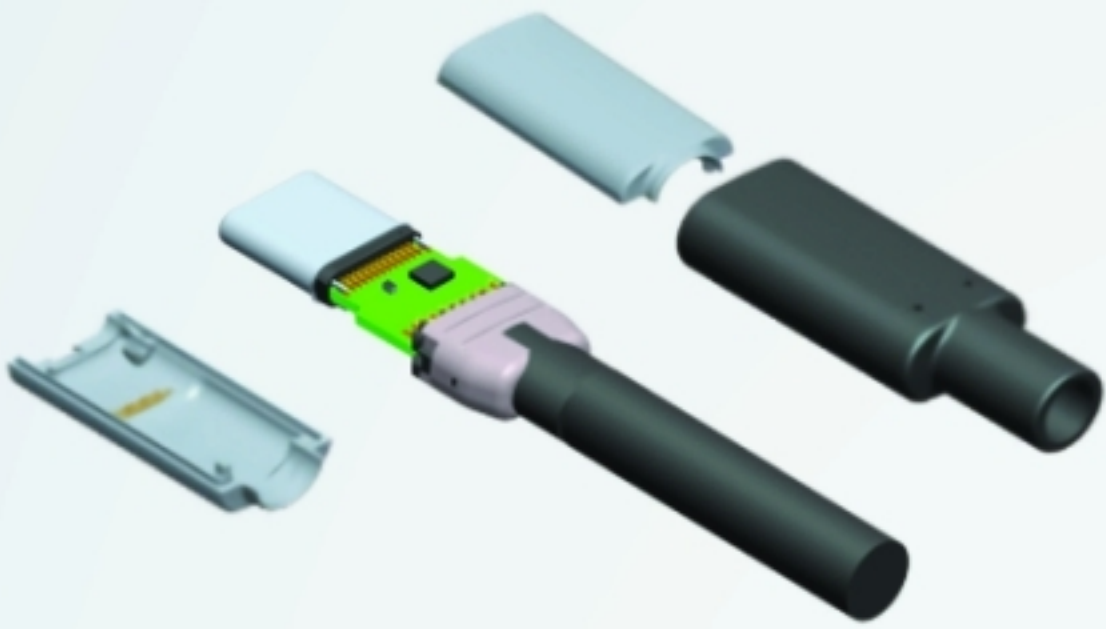


6

- Standardized Insert-mold terminal tongue
- All-In-One shell can be easily configured to customer needs speedily at low cost

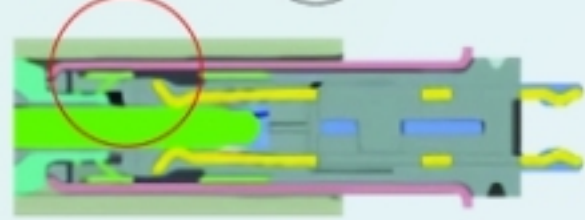


USB Type C Plug Connector

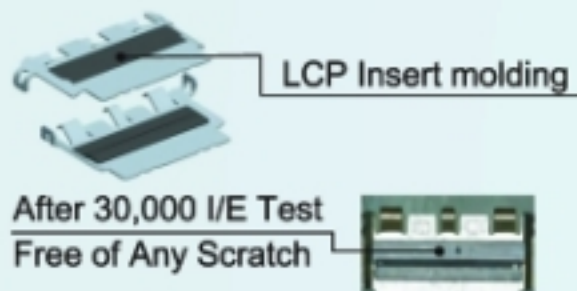


1. Short Circuit Risk Avoidance
2. Unrivaled Mechanical Robustness
3. Easy for EMI/IP67 Compliance
4. Guaranteed 10G/Elec. Performance
5. Modularized Smart Robotic Line
6. Speedy & Economical Customization

1

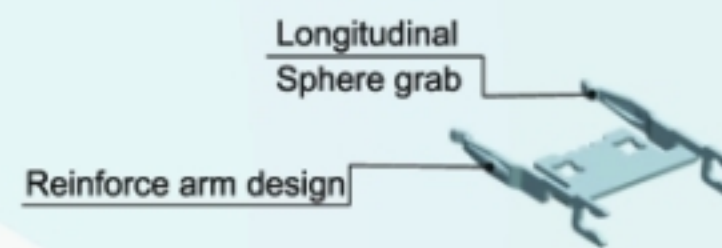


- 100% prevent short circuit exposure
- Passed 30,000 insertion/extraction test



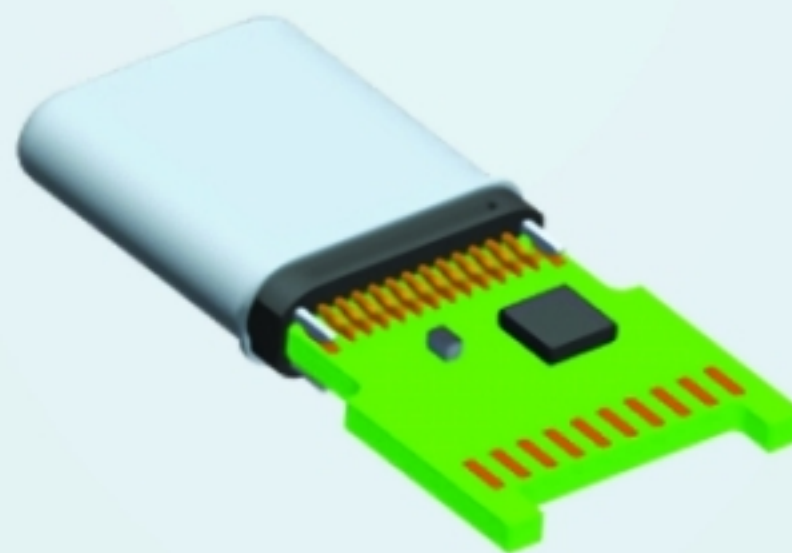
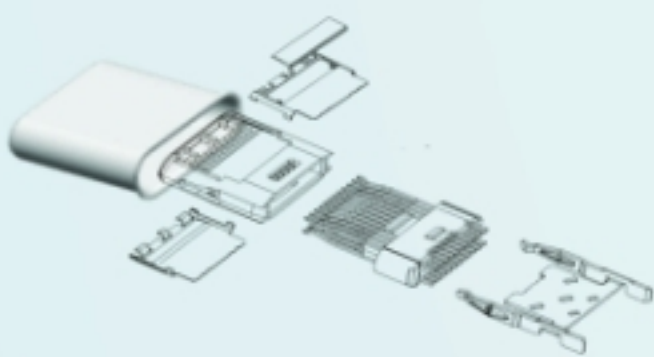
2

- Thoughtful one piece latch mechanism
- Clear feeling of insertion & extraction
- Waterlocked structure design
- Passed 3rd Party Test, w/Superior Performance



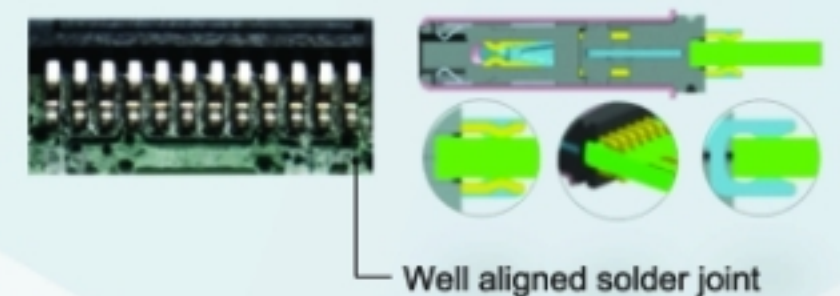
3

- One piece case with reinforce design
- Metal case hardness over 360 Mpa
- Assembly precision <0.02mm



4

- Symmetrical grab hold alignment firmly
- Patented soldering ensure flawless joints
- Assembly precision <0.02mm



5

- Equipped with FANUC six axes robots
- Fully automated intelligent robotic line
- 100% inspection live data analysis
- Virtual Mfg, Traceability, No Strike, Mobility

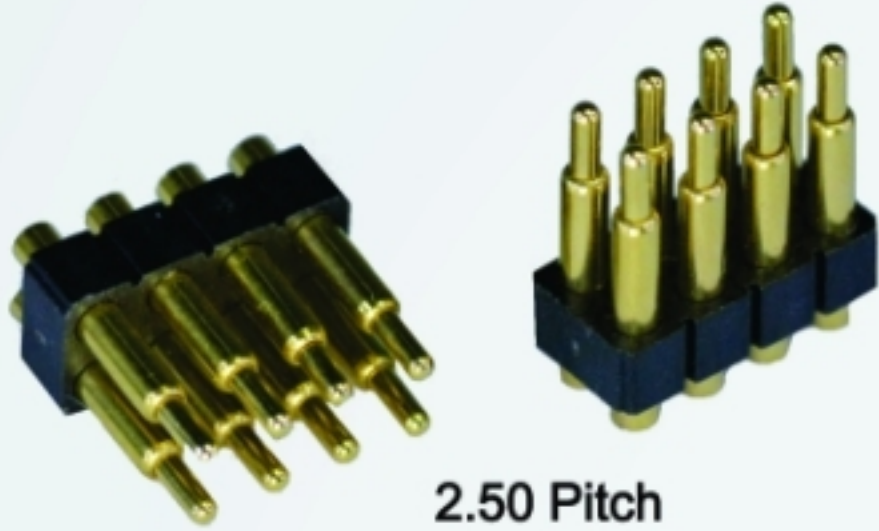


6

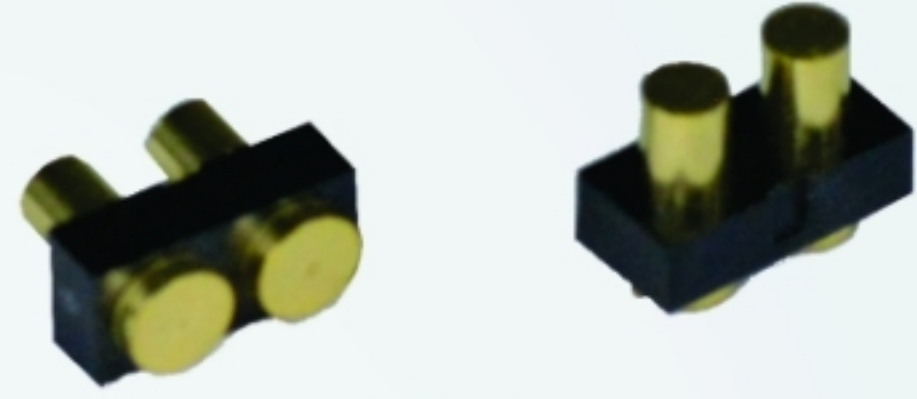
- Standardize element design
- Easy for tailored-made configuration
- Economic tooling cost with short TAT



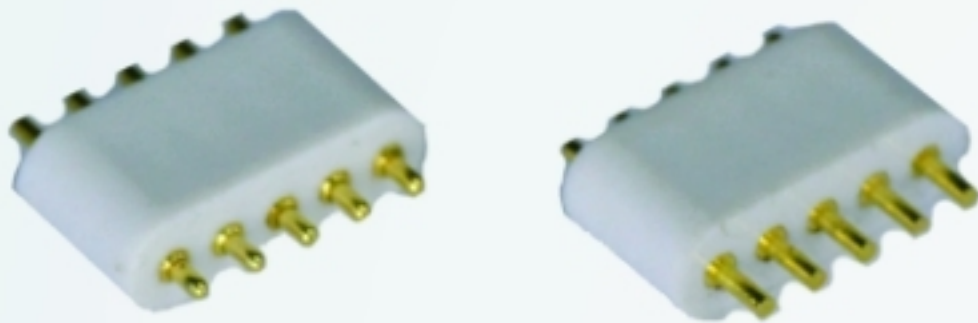
Pogo Pin Series



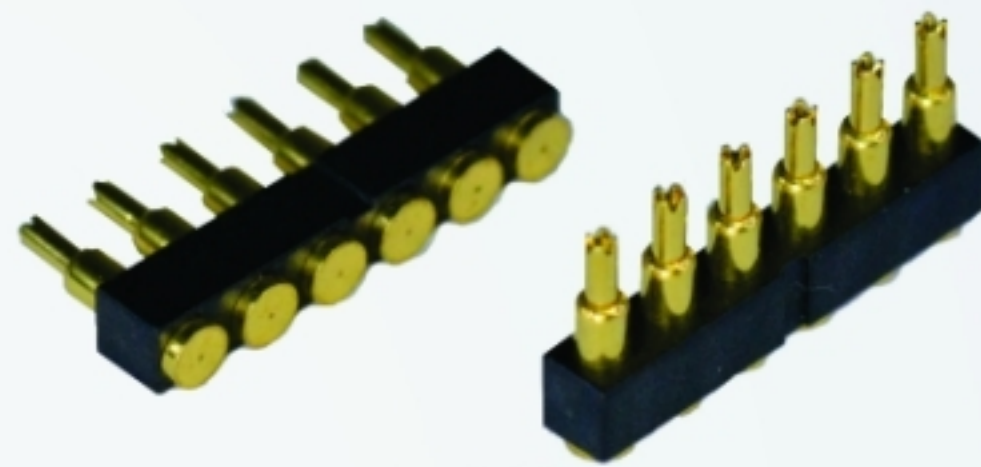
2.50 Pitch



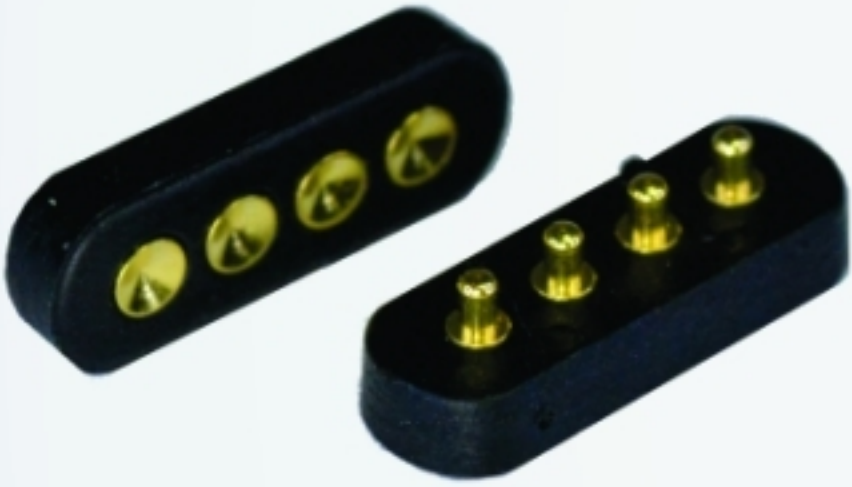
2.50 Pitch



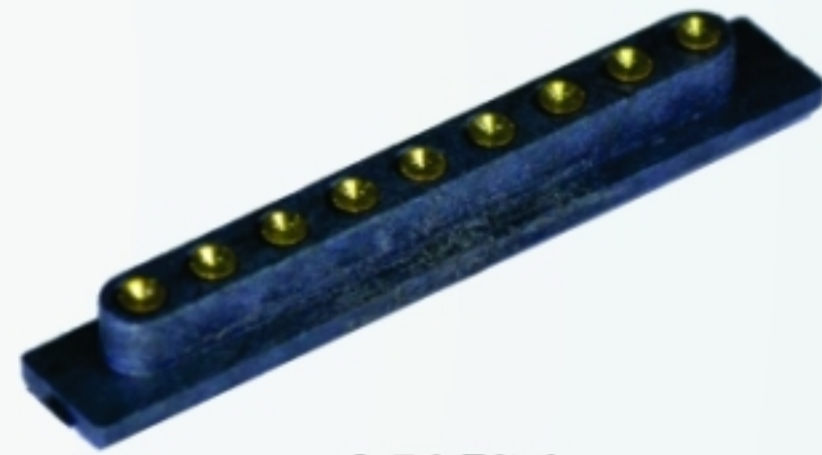
1.50 Pitch



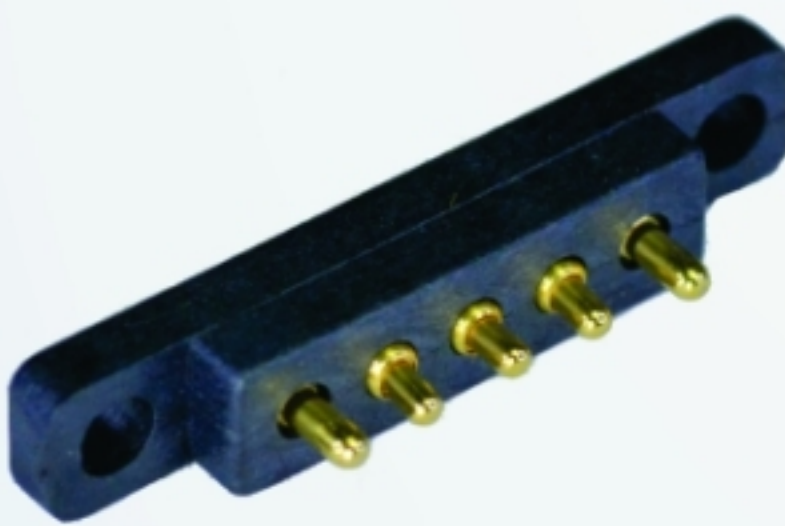
2.54 Pitch



2.54 Pitch



2.54 Pitch



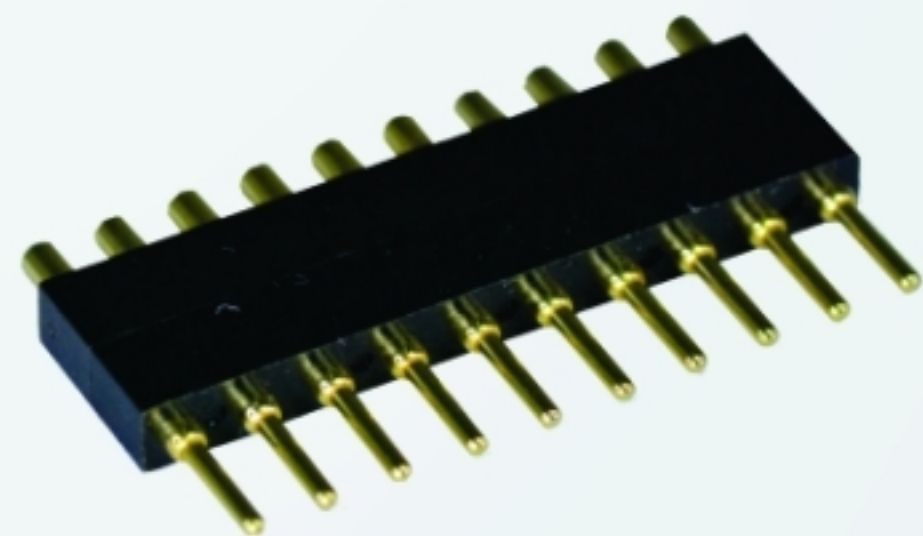
2.50 Pitch



2.54 Pitch

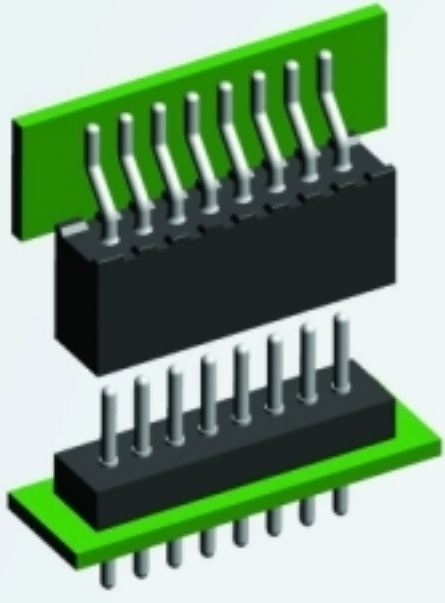


5.50 Pitch

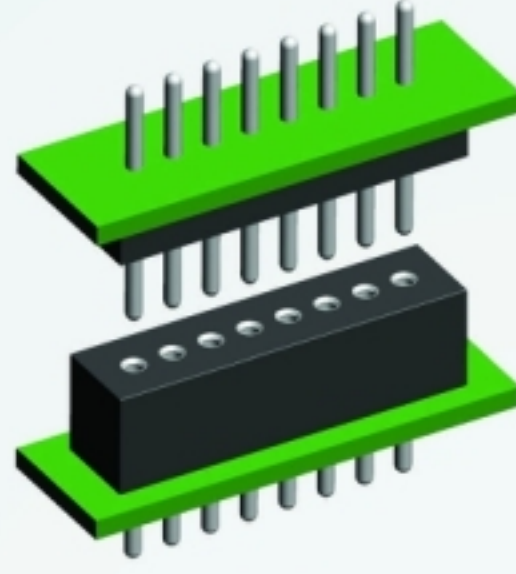


3.00 Pitch

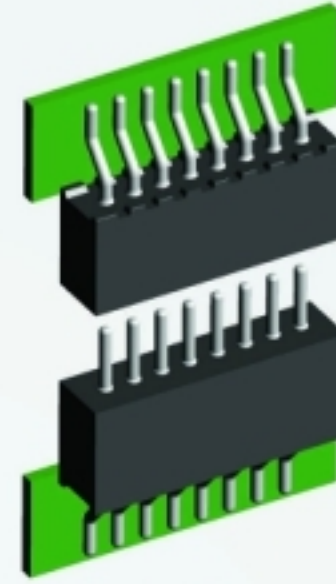
Machine Pin Series



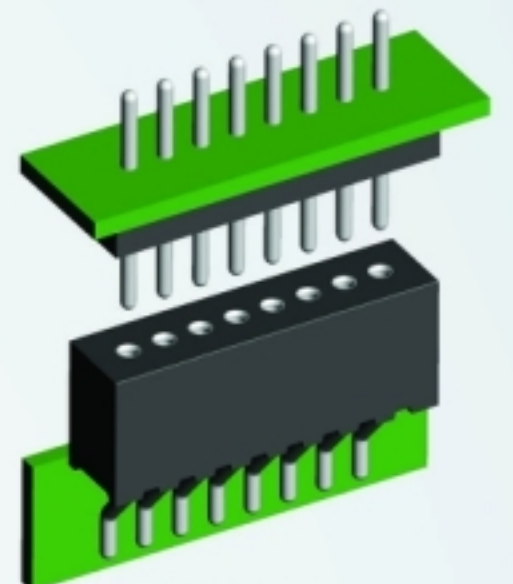
1.00 Pitch



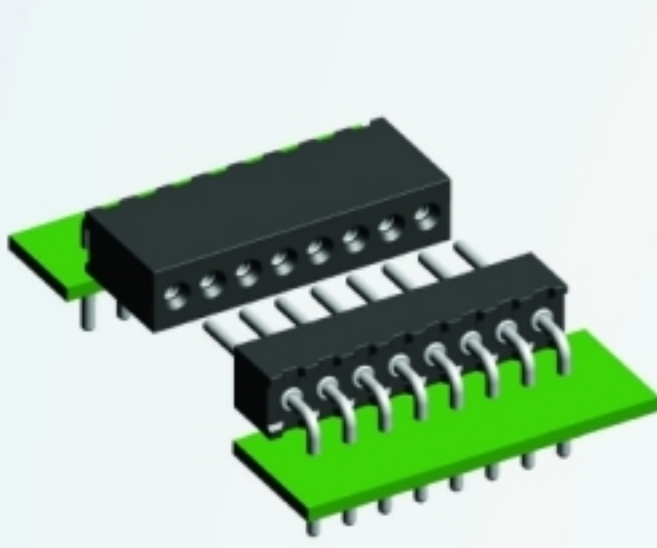
1.00 Pitch



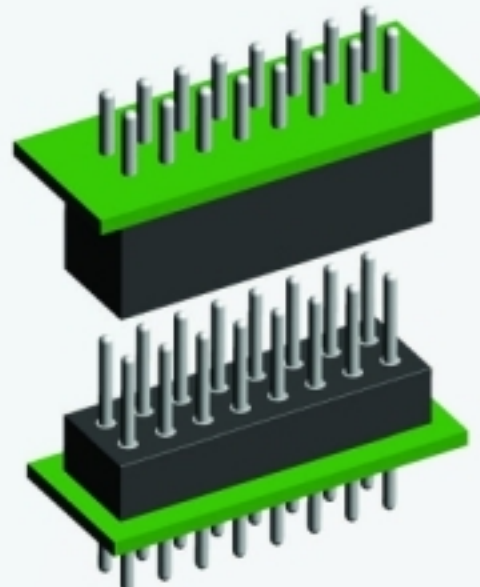
1.00 Pitch



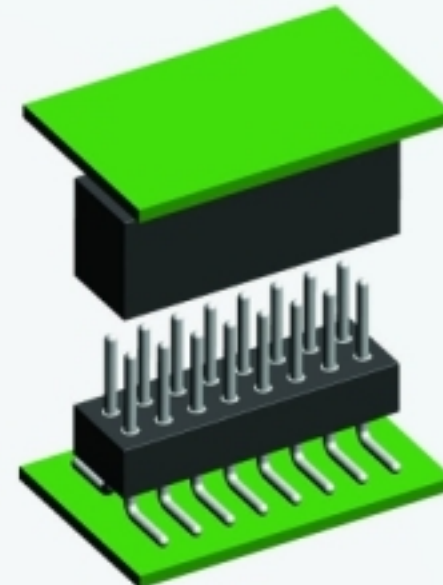
1.00 Pitch



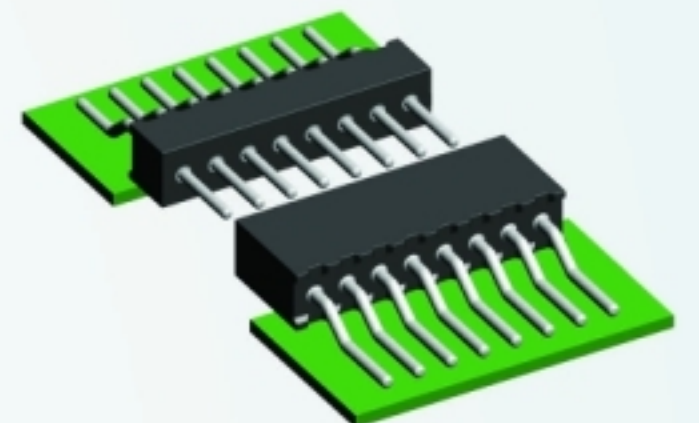
1.27 Pitch



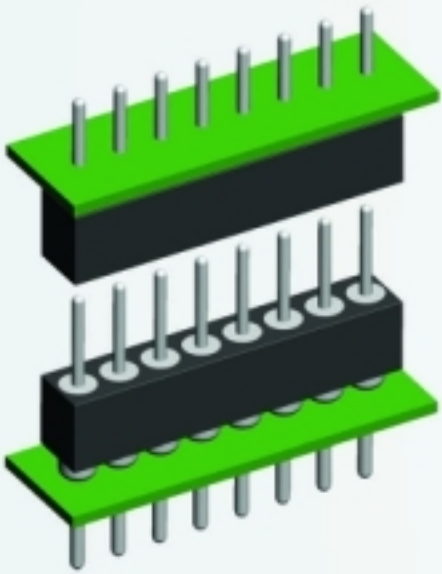
1.27 Pitch



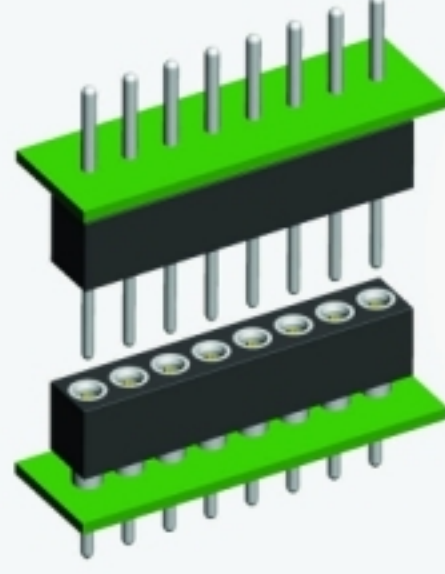
1.27 Pitch



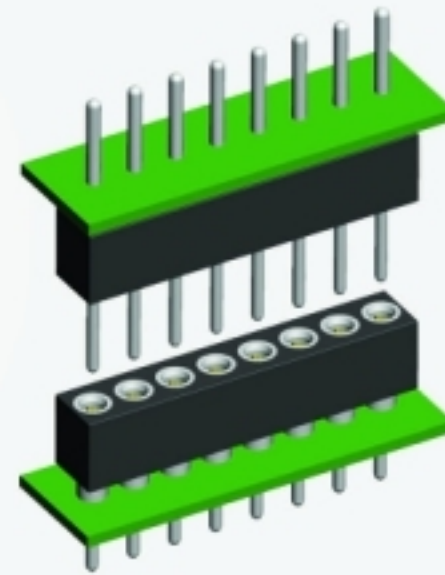
1.27 Pitch



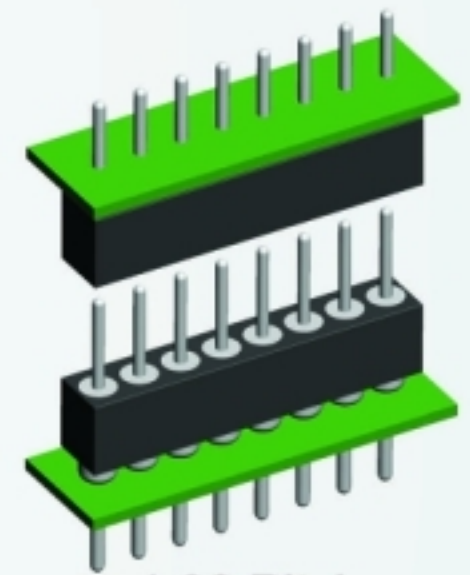
1.778 Pitch



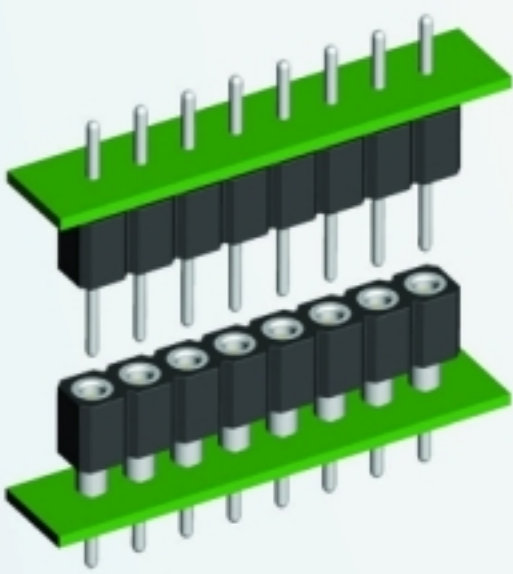
1.778 Pitch



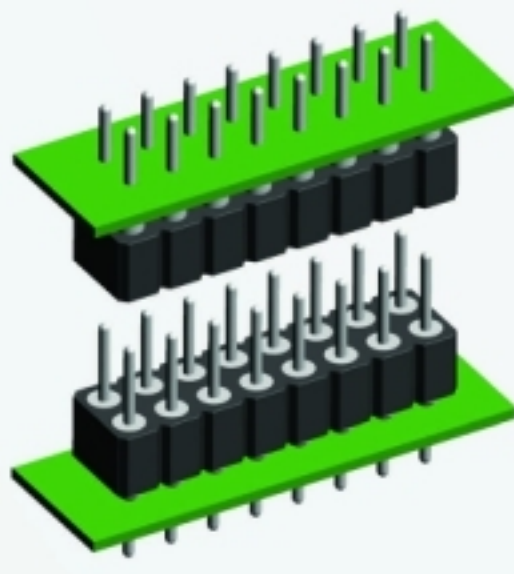
1.80 Pitch



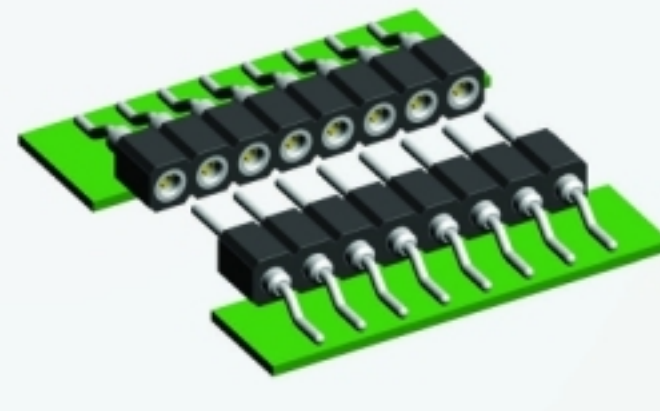
1.80 Pitch



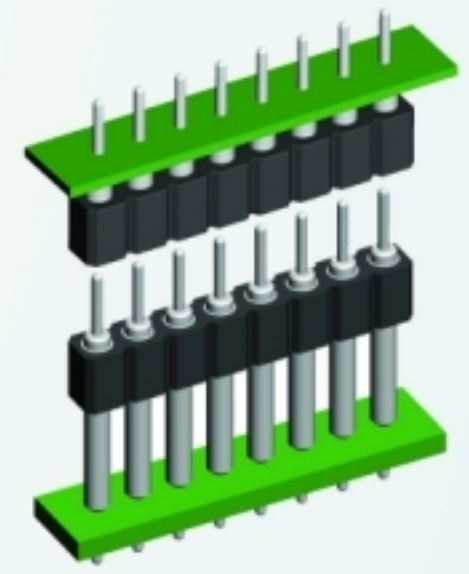
2.00 Pitch



2.00 Pitch



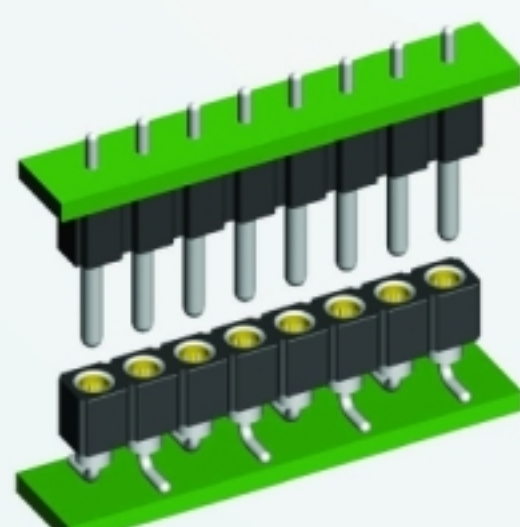
2.00 Pitch



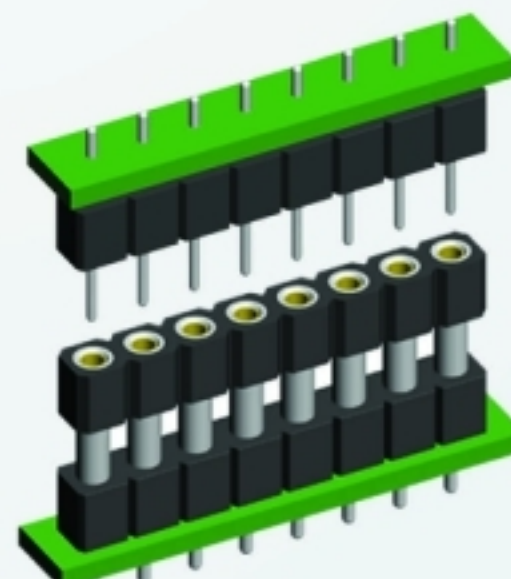
2.00 Pitch



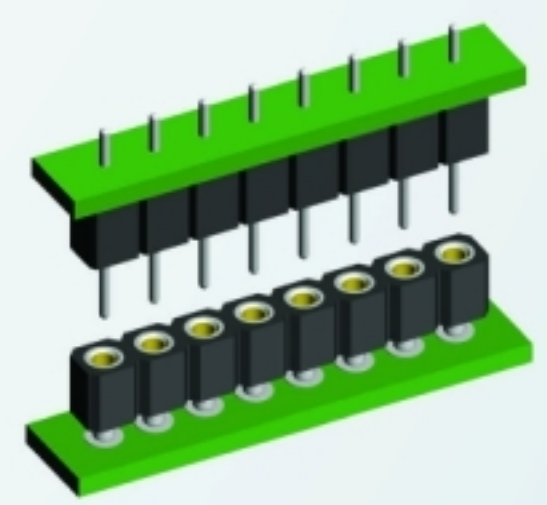
2.54 Pitch



2.54 Pitch



2.54 Pitch



2.54 Pitch

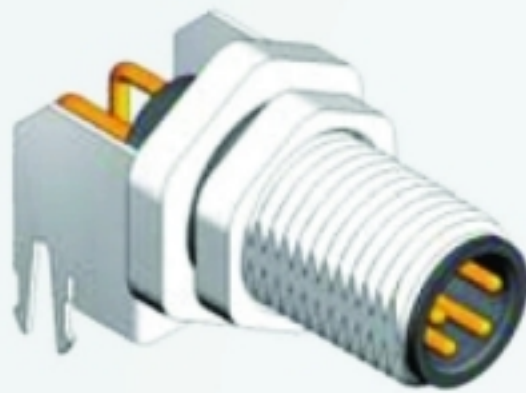
M5/M8/M12/M16 Series System



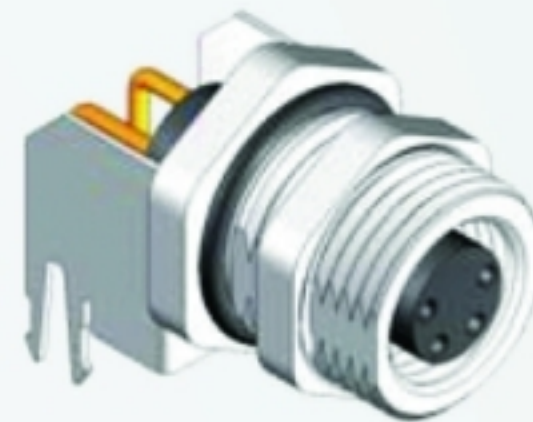
120505-XXP-RA-PM



120505-XXS-RA-PM



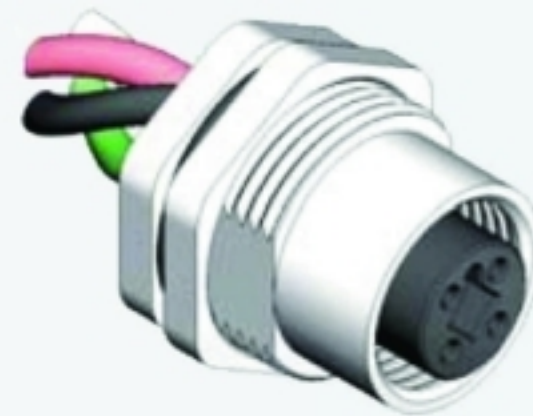
120508R-XXP-FA-PBS



120508R-XXS-FA-PBS



120512-04P-FT-PC



120512-04S-FT-PC



120516-XXP-F02-PM



120516-XXS-F02-PB



MCM16-PMS01



MCM16-SMS01

M Series Connectors



MCM08-SMS01



MCM08-PMSSH01



MCM08-SMSSH01



MCM08-PMRSH01



MCM12-SMQ01



MCM12-PMQ02



MCM12-SMQ02



MCM12-PMQ03



MCM12-PMQ04



MCM12-SMQ04



MCM16-SMQ01



MCM16-PMQ01



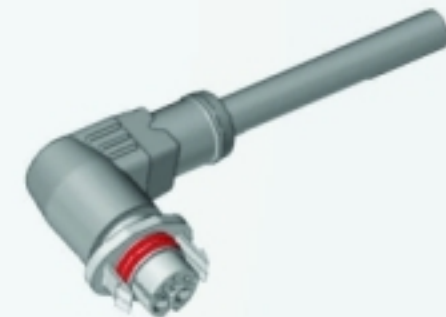
MCM16-PMS01



MCM20-SM01



MCM20-SM02



MCM-G180131-001



120512-XXP-X-AS



120512-XXS-X-AS



120512-XXP-A-AE4



120512-XXS-A-AE4



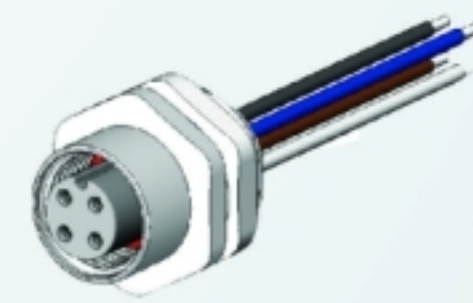
MCA12-SFX01



MCA12-PFX01



MCA12-PRX01



MCA12-SRX01

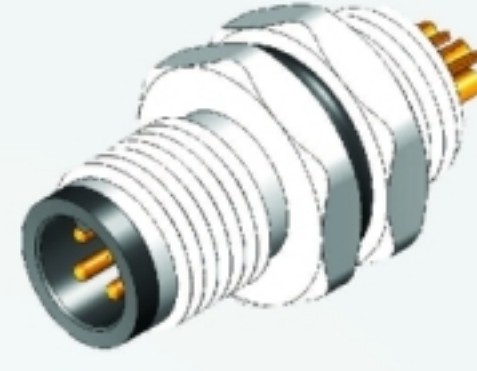
M Series Connectors



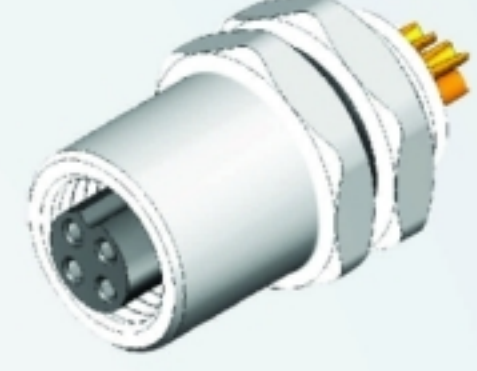
120505-XXP-FA-PM



120505-XXS-FA-PM



120505-XXP-RA-PM



120505-XXS-RA-PM



120508-XXP-FA-PM



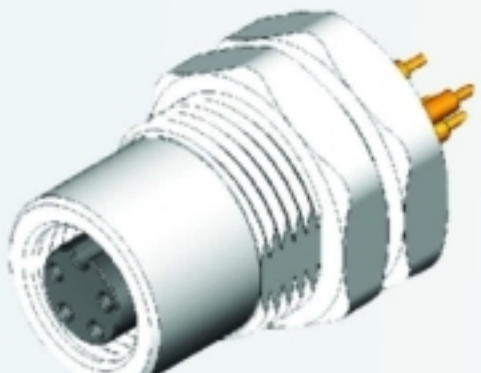
120508-XXS-FA-PM



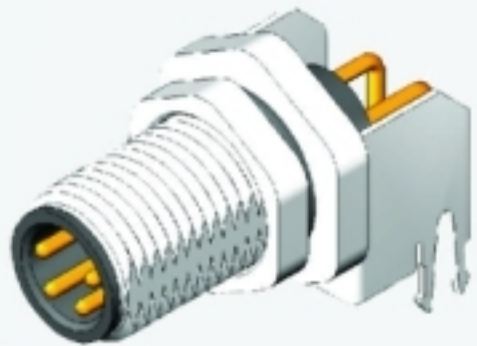
120508-XXP-RA-PM



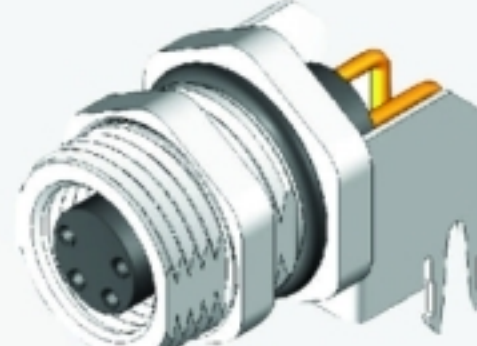
120508-XXS-RA-PM



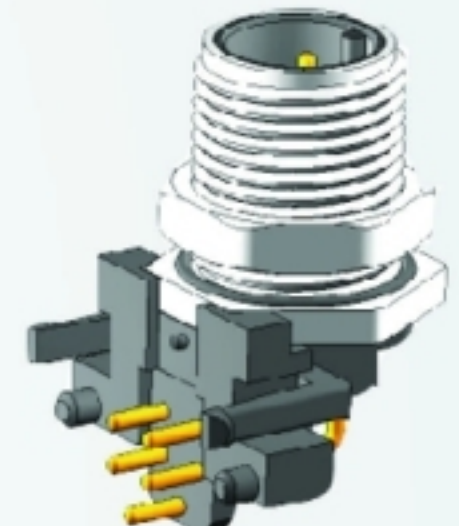
120508-XXS-FA-PB



120508R-XXP-FA-PBS



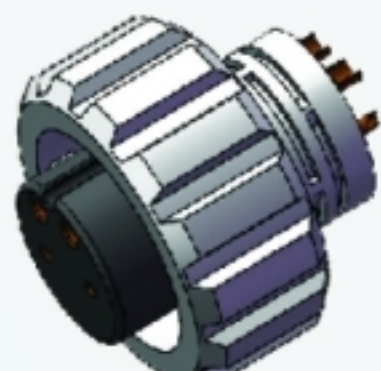
120508R-XXS-FA-PBS



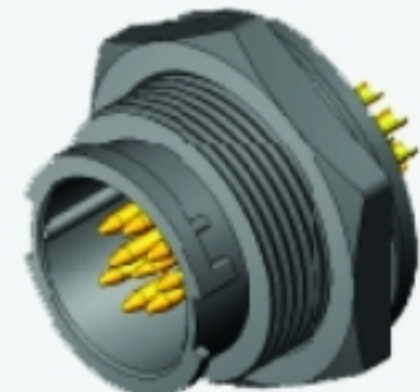
120512R-XXP-FX-PB



120620S-XXP-FA02-PM



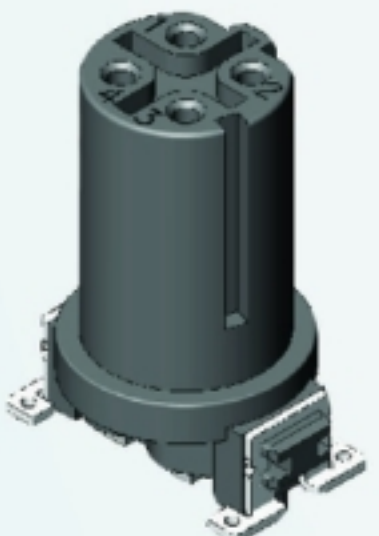
120620S-XXS-FA02-PM



120516-XXP-F02-PM



120516-XXS-F02-PM



120512-XXS-X-SM30-TR



MCM05-PM02



MCM05-SM02



MCM05-PM01



MCM05-SMR01



MCM05-PMR01

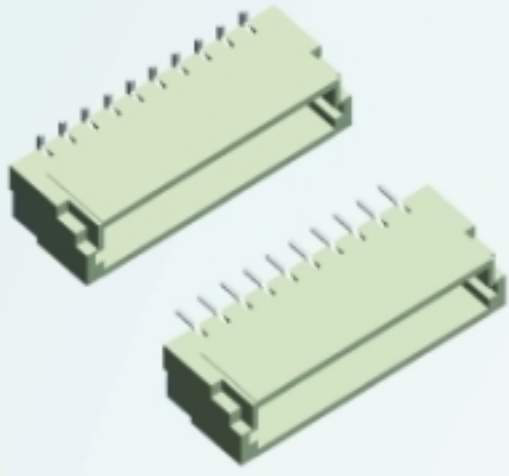


MCM08-PMR01

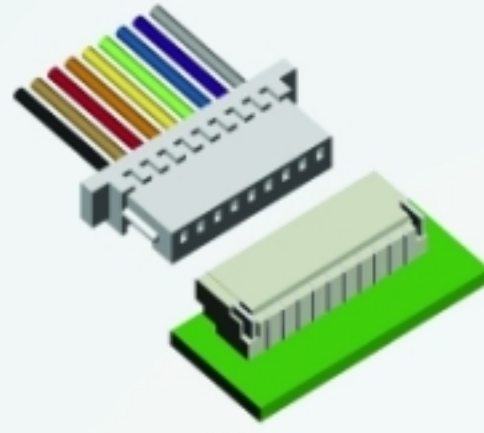


MCM08-SMR01

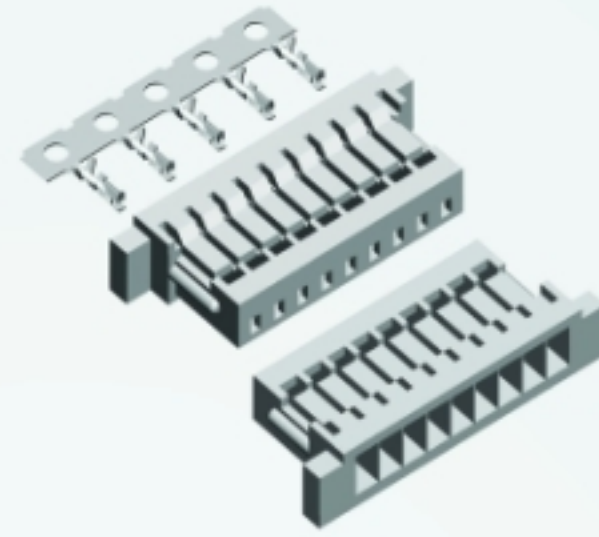
Fine Pitch Connector



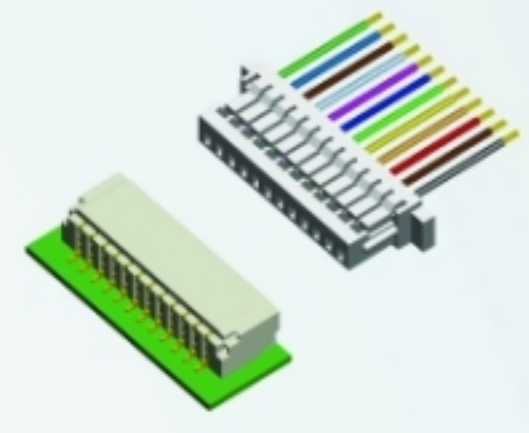
1600S(R)-XX-SM



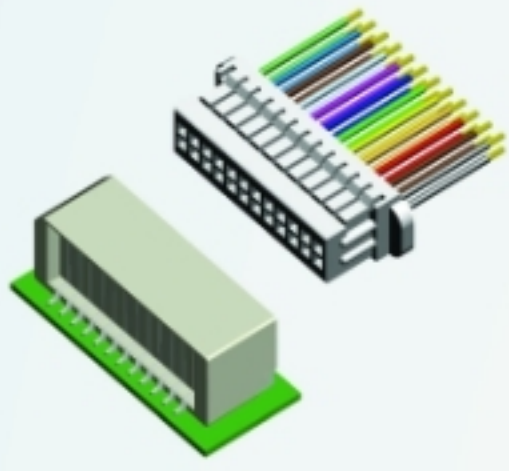
1600S-XX-SM SERIES



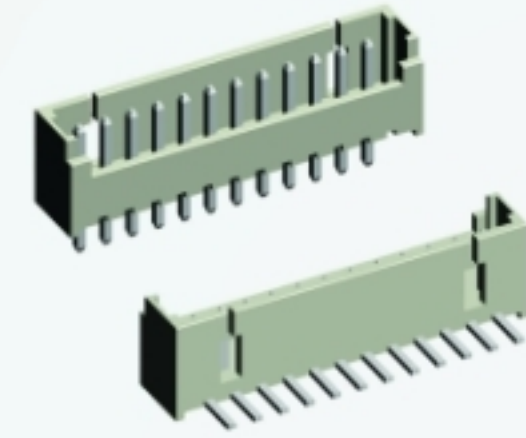
1600H-XX



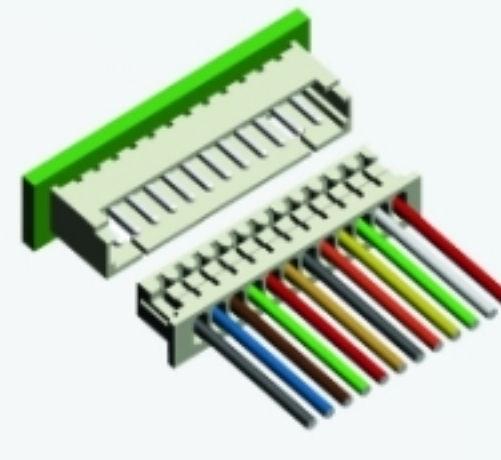
1600H-XX SERIES



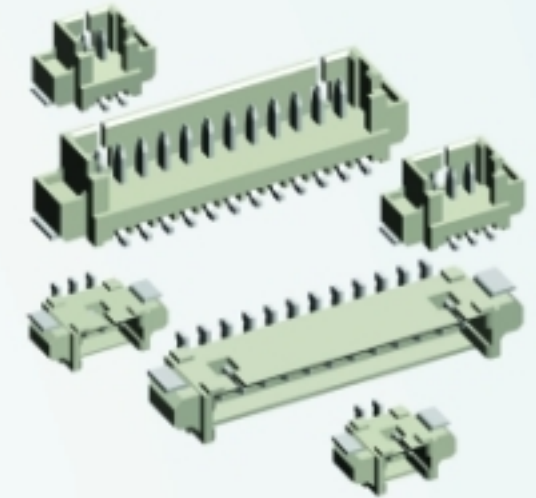
1600HB-XX SERIES



1251SM(RM)-XX



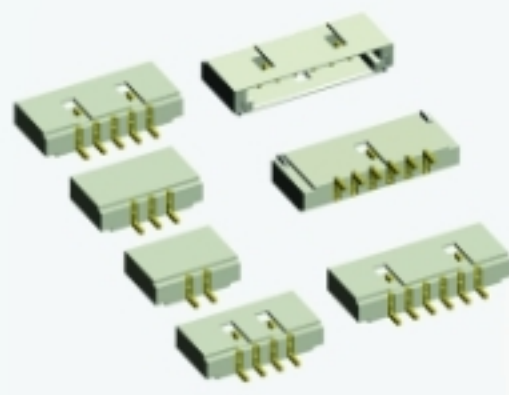
1251SM-XX SERIES



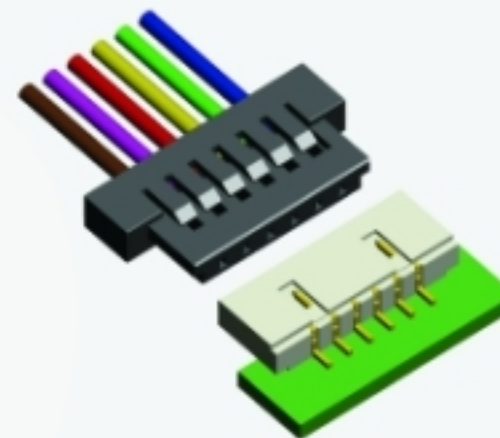
1251S(R)-XX-SM1



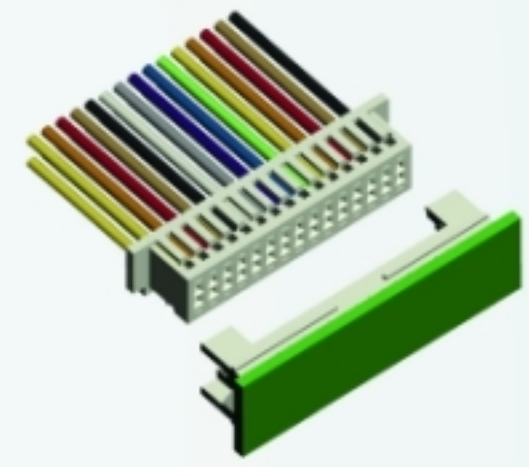
1250HM-XX



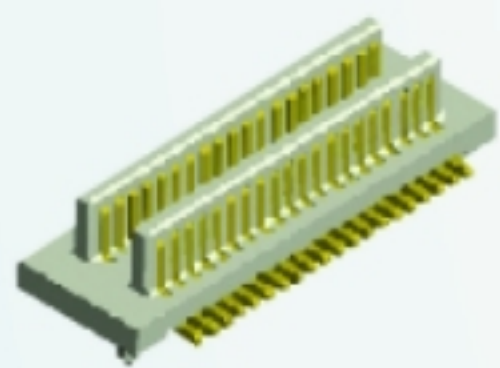
1251R-XXG-SM3



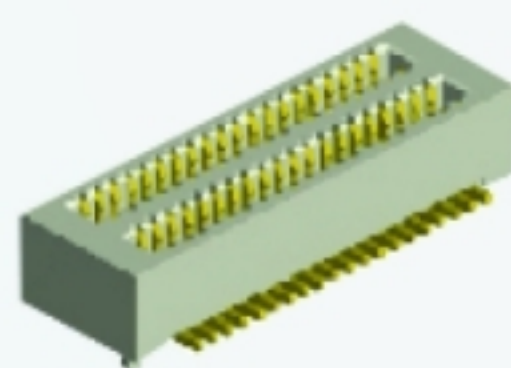
1251R-XXG-SM3 SERIES



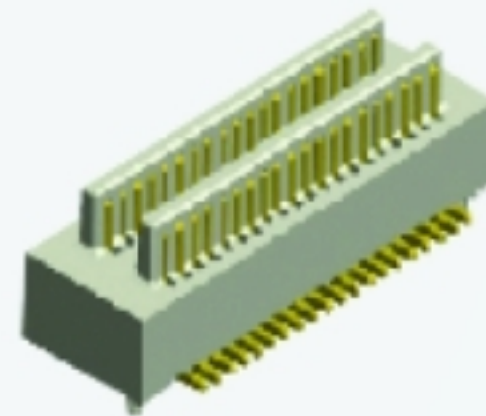
1251H-XX SERIES



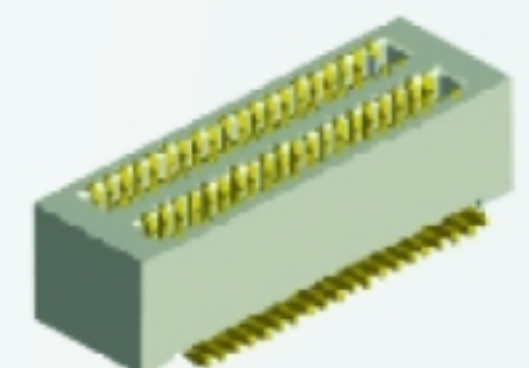
2000P-XXG-240-020



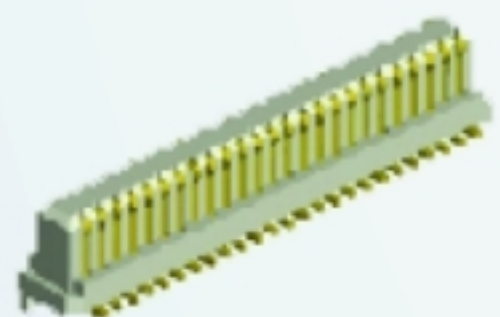
2001S-XXG-220-020



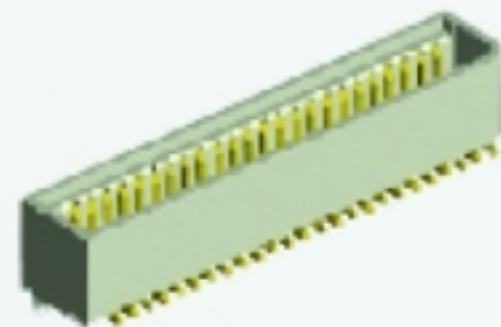
2000P-XXG-390-020



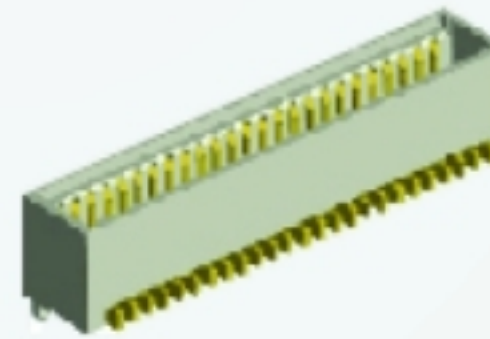
2001S-XXG-300-020



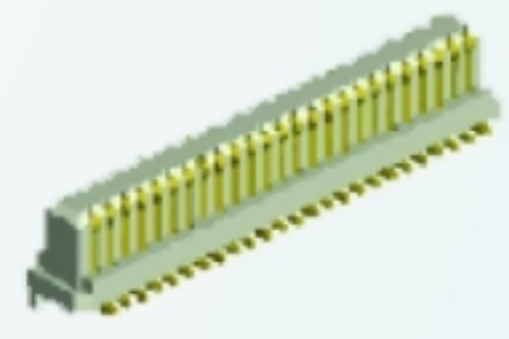
2010-XXG-355-CT



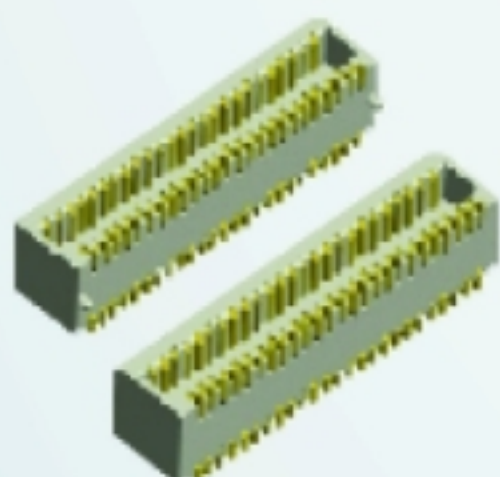
2011-XXG-365-CT



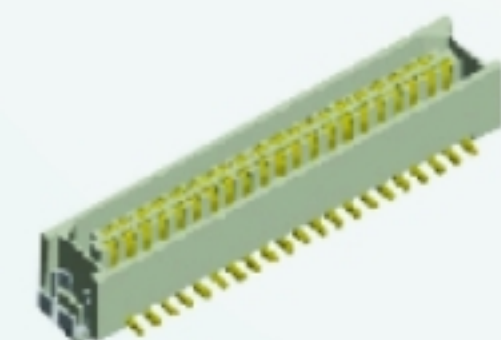
2011-XXG-415-CT



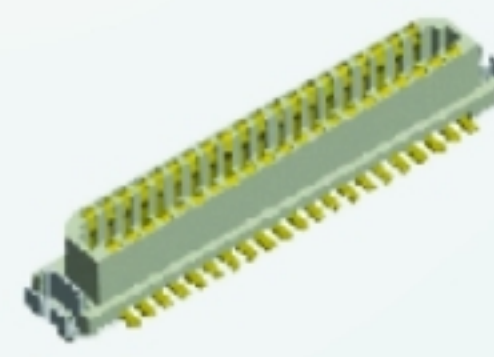
2010-XXG-405-CT



2011R-XXG-470-(PC)

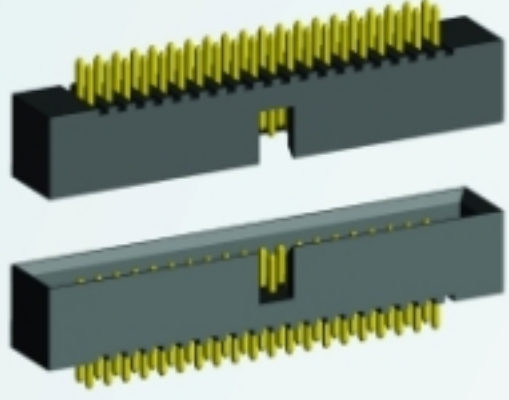


2005P-XXG

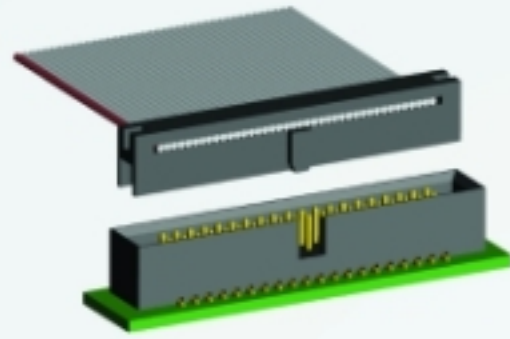


2005S-XXG

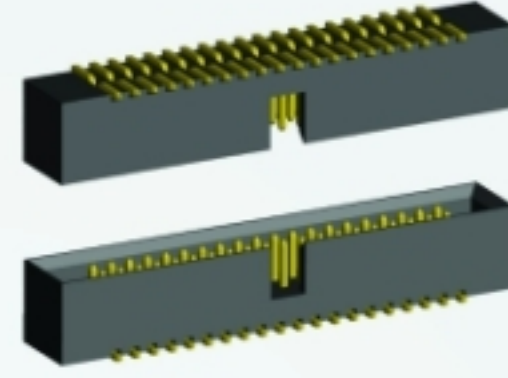
Box Header & IDC Connector



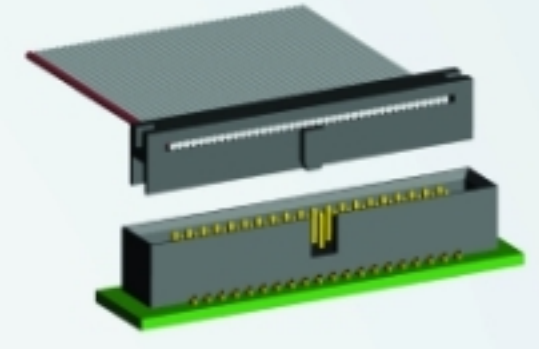
2195S-XXG



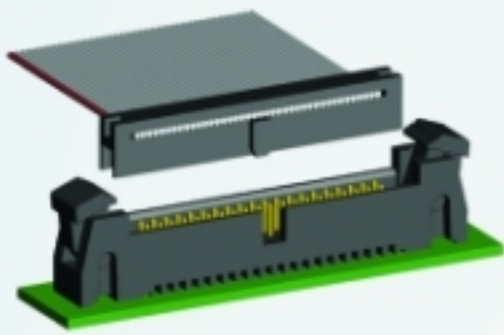
2195S-XXG SERIES



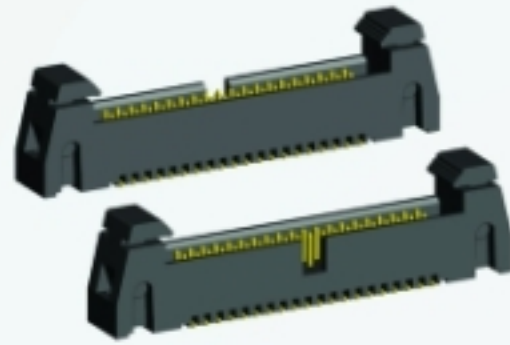
2195SM-XXG



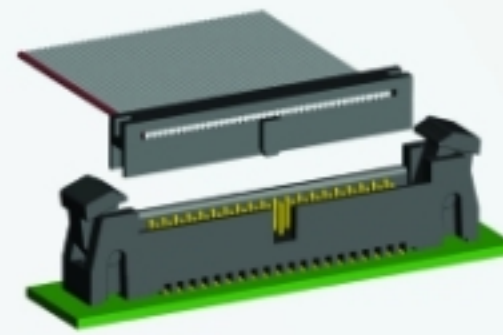
2195SM-XXG SERIES



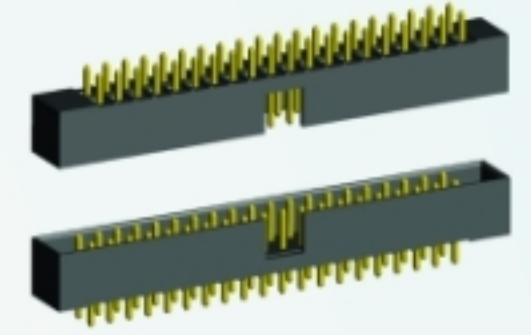
2196S-XXG SERIES



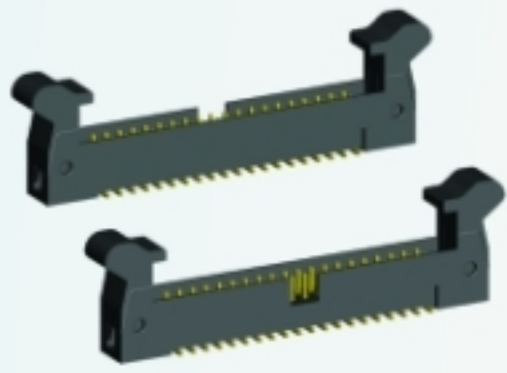
2196SM-XXG



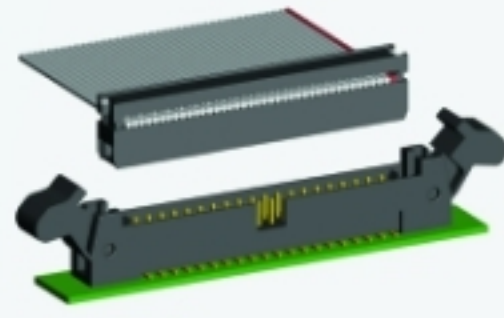
2196SM-XXG SERIES



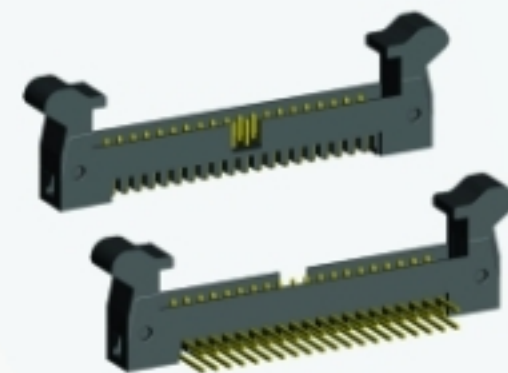
2016S-XXG



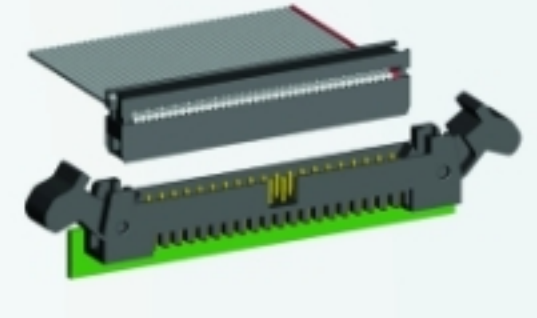
2017SM-XXG-XX



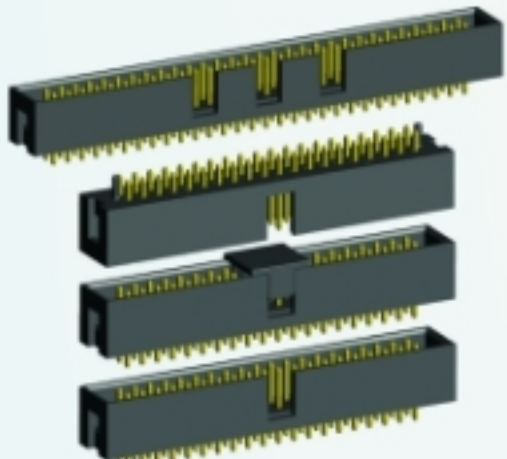
2017SM-XXG-XX SERIES



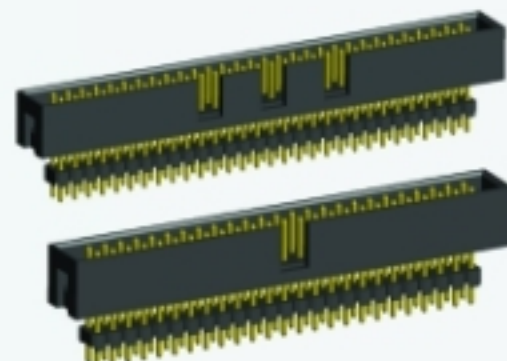
2017R-XXG-XX



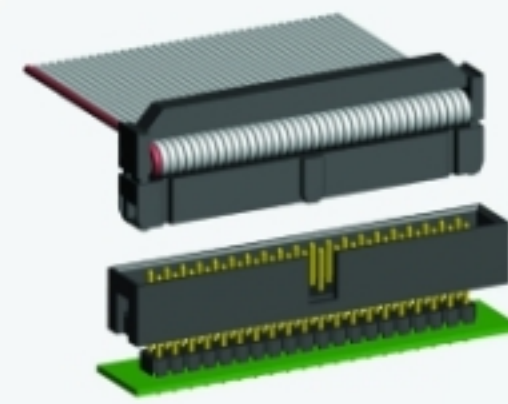
2017R-XXG-XX SERIES



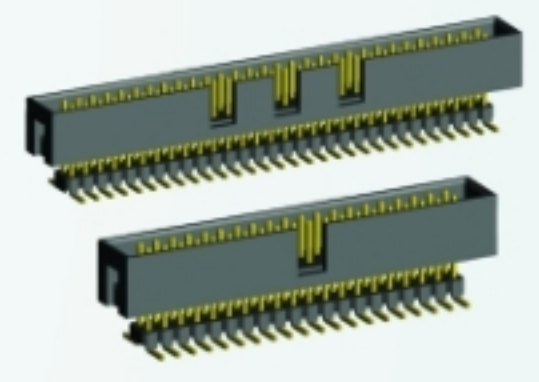
2316S-XX



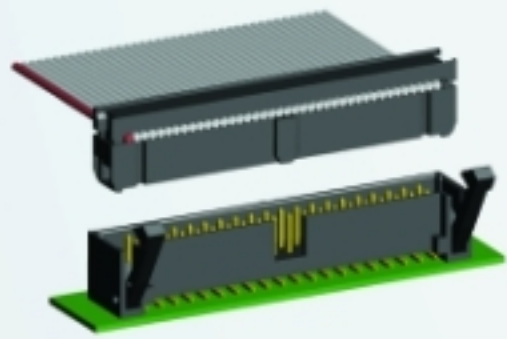
2316113-XXG-1500



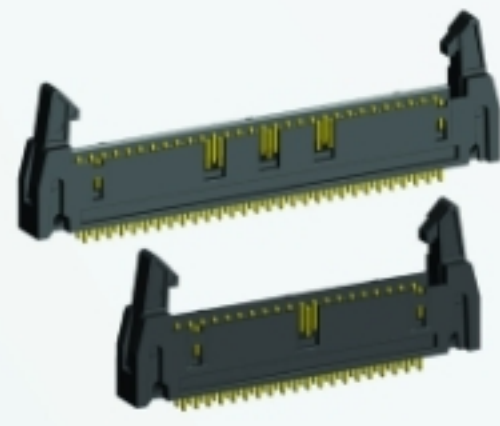
2316113-XXG-1500 SERIES



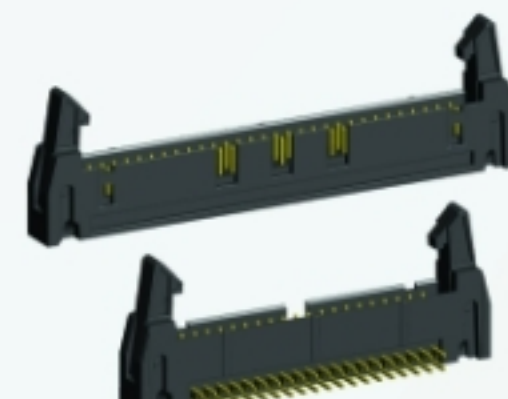
2316113SM-XXG-1300



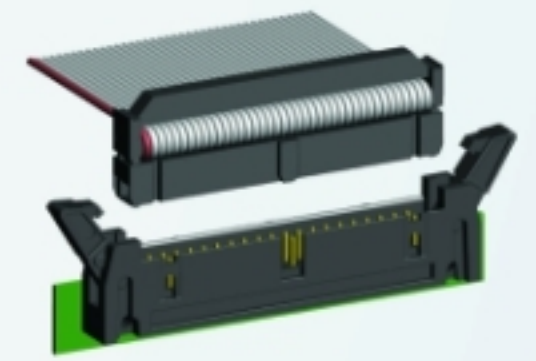
2316SM-XXG-XX SERIES



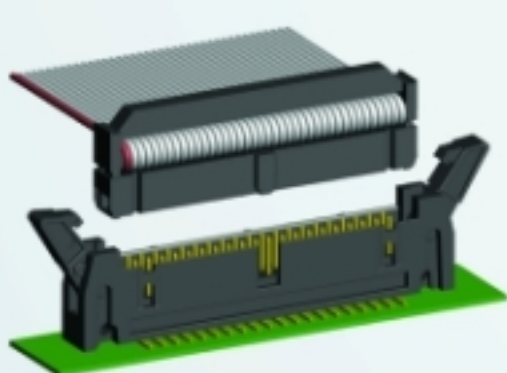
2216S-XXG-02



2216R-XXG-02



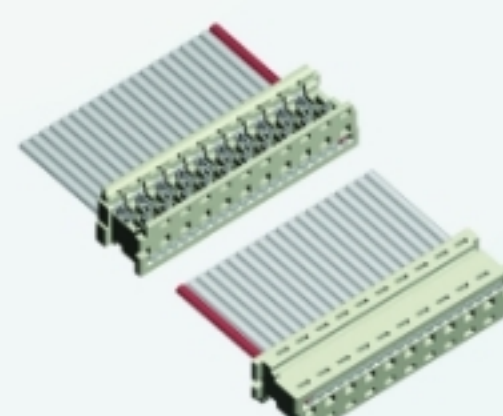
2216R-XXG-02 SERIES



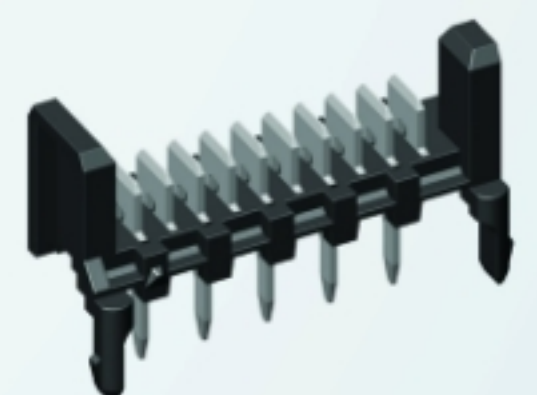
2216SM-XXG-02 SERIES



4411H-XX



4411H-XX CABLE



4411S-XXT-PG

Automotive Products

